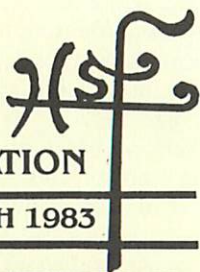


# BULLETIN

OF THE HISTORIC SANTA FE FOUNDATION



VOL. 11/NO. 1

MARCH 1983



Photos by Agnesa Lufkin

## Annual Meeting of the Foundation

The annual meeting of the Historic Santa Fe Foundation was held on January 18, 1983, at Palen Hall in Holy Faith Episcopal Church. A streamlined business meeting was followed by historian Robert M. Utley speaking on "Outdoor Archives: Landscapes and Structures in the Writing of History."

In a move designed to present the membership with all the pertinent facts in the most efficient manner, the Board of Directors at their November, 1982, meeting adopted a resolution that all annual committee

reports be submitted to the chairman. As a result, Chairman Don Van Soelen presented the reports with the exception of the nominating committee, whose chairman, George Ewing, announced the nominations. Allen McNown did not run for reelection to the Board and Santa Fe architect Richard Grenfell was elected to his first term. Ed Ortega, Jordie Chilson, John Baxter and Pen LaFarge were reelected to three year terms.

Speaker Utley is an historian of  
*(continued on page 2)*

---

### Annual Meeting *(continued from page 1)*

impressive credentials. He started his career while still in college, working in 1947 at the Custer Battlefield National Monument. From that time he went on to be historian in a number of important positions, including historian for the Joint Chiefs of Staff. For several years he worked for the National Park Service, and became Chief Historian for that service. From 1977 until his retirement in 1980 he was Deputy Executive Director of the President's Advisory Council on Historic Preservation.

In his presentation to the Foundation, Utley discussed the advantages to historians of actual field work, citing those American scholars who really stood at the Cumberland Gap and at South Pass before embarking

on their literary efforts. Leaving his talk by recounting incidents such as the scattering of his manuscript over the Butterfield Stage route and digging a pick-up out of the mud on a mountain pass in Utah, Utley gave an entertaining and instructive program both for historians and readers of history.

Foundation member Anita Thomas brought up the question of the reconstruction planned by the city for the Washington Avenue-Paseo de Peralta intersection, objecting to the widening. This position was seconded by Mary Jean Cook and Pen LaFarge.

After adjournment, members enjoyed the traditional refreshment of hot chocolate and biscochitos.

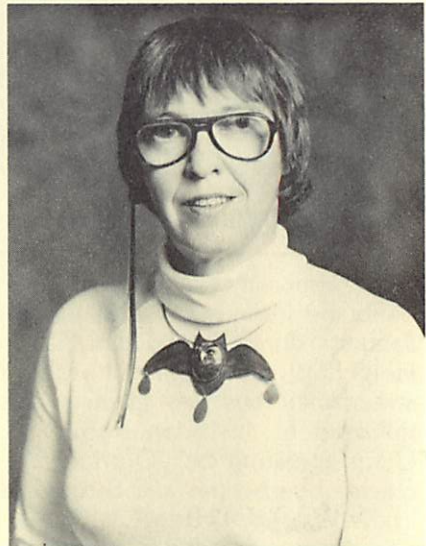
---

## 1983 Chairman Elected

---

Louann Jordan, the Foundation's new Chairman, has been Vice-Chairman for two years and is serving the last year of her second term on the Board. A resident of Santa Fe for more than 12 years, Ms. Jordan is a free-lance graphic designer. She teaches graphic arts and the popular "Sketch Tour of Historic Santa Fe" at the College of Santa Fe Continuing Education.

"I look forward to an active year in the Foundation," she said. "We will be more visible in these times of great changes in Santa Fe." She pledges to support a closer cooperation with local historic groups, to sponsor educational programs, to expand the research program and to offer more membership activities.



Louann Jordan

# 1982 CHAIRMAN'S REPORT

As reported at the Annual Meeting, I have completed two years as your chairman of the Foundation and this year completes my six-year term. We believe it is in the best interest of the organization that a member is compelled to go off the board for at least one year.

A lot has transpired since 1978. Renovation of the Tully House was being done under the able direction of Donna Quasthoff and the dedication of many others. Later the Foundation was given the Delgado House and El Zagan. As a result the Foundation's total assets now exceed half a million dollars. It has a good liquid position so that it would be able to move quickly if a need pre-

sented itself.

This past year the Board spent a good deal of time developing a stronger committee structure with budget responsibilities so the full Board was not spending so much time in its monthly meetings over minutiae of detail. Other accomplishments were negotiation of a new lease for the Tully House, major improvements at El Zagan and finalization of the LaCorte Building lawsuit. The third issue of *Old Santa Fe Today* was published and the Harmonium rededicated in Loretto Chapel by Archbishop Robert F. Sanchez.

The Board looks forward to a challenging 1983. —Don Van Soelen



*Annual Meeting of the Foundation*

---

# REGISTERS AND PLAQUES

---

One of the most common words in the historic preservation vocabulary is the "Register," and perhaps the question most frequently asked concerning the status of an endangered historic structure is, "Is it on the National or State Register." Since this is the case, perhaps a word of explanation as to its meaning and importance is in order. A *Register* is the formal listing of historic structures, sites, districts and objects in a formal document of registration, under the control of a designated authority who is responsible for its maintenance. Hence, the first, and most important, action to be taken for the preservation of an historic property is its placement on the National and/or State Register and, in Santa Fe, designated as "worthy of preservation" by the Historic Santa Fe Foundation.

In order to qualify for registry, properties must be accurately documented as to their historical integrity and importance. The documentation should be critically reviewed by a qualified board or committee empowered to approve or deny the inclusion of the property on the register.

The federal government through the National Park Service of the Department of the Interior is responsible for two registers, the older and more restrictive Registered National Landmarks and the much more extensive and better known National Register of Historic Places. The Historic Sites Act of 1935 declared the preservation of historic sites, buildings and objects of national significance for public use to be a matter of national policy. The Historic Sites Survey was created to locate and identify such sites. Renamed in 1957 as the National Survey of Historic

Sites and Buildings, the Registered National Landmarks was then established to recognize sites of special national importance as a means of encouraging their owners to protect them. Santa Fe has three National Landmarks: the Plaza, the Palace of the Governors and the Barrio de Analco.

Among the provisions of the comprehensive 1966 National Historic Preservation Act was the mandating of the Secretary of the Interior to maintain the National Register of Historic Places, a much expanded register to be composed of districts, sites, structures and objects of significance in American history, archeology, architecture and culture. In order to be eligible for federal historic preservation funds and grants-in-aid a state had to enact its own historic preservation legislation bringing it into compliance with the exacting requirements of the federal act. The New Mexico legislature, under the leadership of then-Senator Tibo J. Chavez, responded by passing one of the model state laws, the 1969 Cultural Properties Act. An important provision was the establishment of the New Mexico State Register of Cultural Properties, to be maintained by the Cultural Properties Review Committee, composed of seven professional historians, archeologists and architects. The Committee was also designated as the agency for recommending sites and properties to be placed on the National Register. According to the State Historic Preservation Bureau, Santa Fe at present is represented by 21 sites on the National Register, including the Santa Fe Historic District itself, all of which are automatically on the State Register. An additional 70 properties are on the State Register

for a total of 91.

Thanks to the Historic Santa Fe Foundation, however, the program for the registry and preservation of significant structures and sites in our ancient capital had already been in existence for five years when the Historic Preservation Act was passed. One of the priorities of the Foundation after it was organized in 1961 was a continuing research program to identify and document historic structures. Those deemed worthy of preservation on the basis of their recorded history were then eligible to display the Foundation plaque. Shortly thereafter, a city ordinance established the Historic Sites Commission to determine those buildings which should receive official city protection. This commission, which was in existence until the recent revision of the city historical district ordinance, recommended that the list of structures documented and accepted by the Foundation form the city register. The first edition of *Old Santa Fe Today*, containing the story of 33 significant sites and buildings, was published in 1966, about the same time as Congress was enacting the National Historic Preservation Act. More than half of the properties now on the State and National Registers were entered on the basis of the documentation prepared by the Foundation's research committee.

## **Plaques**

A plaque designating a structure as of historical importance is an effective visual method of dignifying its status and making the public aware of the need for protection. Markers denoting recognition on one or more registers are affixed to many Santa Fe buildings and structures. The Foundation's distinctive bronze medieval-shield-shaped emblem,

containing the historical name of the building and the phrase, "The Historic Santa Fe Foundation finds this building worthy of preservation" is the most familiar. The National Park Service has no program for providing plaques for National Register sites, although approved bronze markers, rectangular in shape, designating such registry can be purchased by the owner from commercial sources.

Official bronze plaques designating National Landmark status are, however, provided by the Department of the Interior. In addition to the name of the site and the date of registry these markers carry the text, "This site possesses exceptional value in commemorating and illustrating the history of the United States. U.S. Department of the Interior, National Park Service." That for the Plaza was installed in 1962 outside the iron fence on the south side of the Soldiers' Monument. Although eligible for all accepted plaques, the venerable Palace of the Governors displays only its National Historic Landmark designation in 1961, mounted on the inside wall of the reception area, facing the main entrance.

The Palace does, however, have other markers. Many years ago, handsome wooden framed texts were installed on the exterior of the south wall on both sides of the main entrance which give a brief history of the evolution of the Museum of New Mexico, as well as of the building itself. The text to the right reads:

"The Palace of the Governors  
Seat of the Museum of New Mexico  
School of American Research  
and Historical Society of N.M.  
Dedicated to the recovery,  
Conservation and display of  
the Archaeology, Ethnology  
History and Art of the Southwest  
The Palace is a State Monument."

(continued on page 6)

That on the left states:

"El Palacio Real

Fortress and castle built by the  
Order of the Spanish Crown 1610-1612  
Seat of government under three flags-  
Spanish, Mexican & American

From 1610 to 1910 the residence  
of over a hundred governors &  
Captains General

The oldest public building in the  
United States

An identical plaque with this wording  
is mounted on the Lincoln Avenue  
side of the Palace to the right of the  
blue gate.

The design for an official plaque  
for State Registered sites was adopt-  
ed by the Cultural Properties Review  
Committee in 1974. Fashioned of  
permaloy and slightly rounded in  
shape, this designation carries the  
Zia symbol logo of the Committee.  
The name of the site, a number list-  
ing its rank on the Register and a  
brief statement of significance are in-  
scribed in the center of the symbol,  
surrounded by the phrase "Regis-  
tered Cultural Property State of New  
Mexico." State Register plaques may  
be purchased by owners of regis-  
tered properties through the good  
offices of the Historical Society of  
New Mexico.

No National Historic Landmark

plaque commemorates the Barrio de  
Analco. Because of its special signifi-  
cance, however, a Foundation  
marker with a lengthier text is in-  
stalled on the northeast corner of the  
Antique Art Shop at the exit for de  
Vargas Street. "This neighborhood  
was first established in the early  
1600s by Tlascalan Indian servants  
for whom the original San Miguel  
chapel was built. Razed during the  
Pueblo Revolt in 1680; resettled by  
families of Spanish soldiers after the  
de Vargas reconquest of 1693 when  
the chapel was reconstructed."

The "Professor J.A. Woods  
House" on Armijo Street, one of the  
most recent structures to be docu-  
mented by the Foundation and to be  
placed on the State Register (*Bulle-  
tin*, October, 1981) is probably the  
most plaqued building in the city, dis-  
playing the Foundation and State  
Register symbols and the bronze  
plaque authorized by the U.S. De-  
partment of the Interior. The text  
states that the house "Has been  
designated as a significant property  
within the Santa Fe Historic Dis-  
trict." This is apparently the only Na-  
tional Register plaque presently in-  
stalled on a Santa Fe historic  
structure. —Myra Ellen Jenkins

---

## Winter in Taos

---

Las Palomas de Taos recently an-  
nounced the reprinting of *Winter in  
Taos* by Mabel Dodge Lujan. The  
original edition is now considered a  
rare book. The new 264-page paper-  
back edition has a foreword by

Frank Waters and 20 photographs,  
some by Ernest Knee. It retails for  
\$14.95. If you are unable to find it  
locally, call Las Palomas de Taos,  
758-9456.

# Instant Old Town in Texas

## Old-time fervor

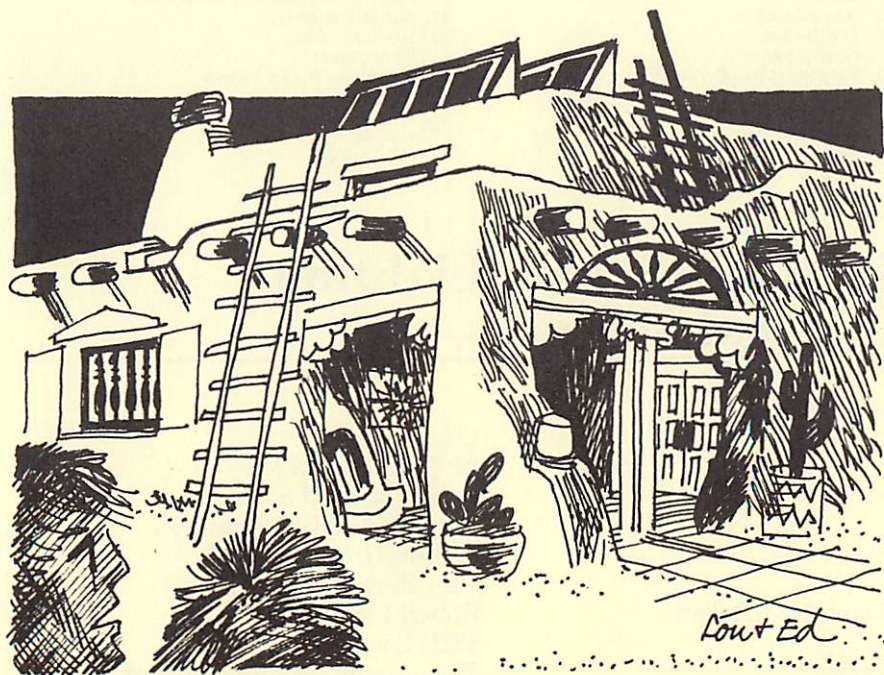
Addison, Tex., doesn't seem to think much of its existing old buildings. So it's tearing down about a dozen 30-to-40-year-old structures to build a 35-acre "Old Town" re-creating a late 19th-century downtown.

Private developers will construct the \$13 million project and will have strict design control over the architecture. Three styles will be allowed: a lacy French style recalling New Orleans; emulations of San Francis-

co's Eastlake row houses; and Queen Anne brick indigenous to small Texas towns. No building will exceed three stories, and flashing or garish signs will be banned.

City officials deny that they are trying to create "instant history" in the Dallas suburb, but are more interested in "architectural design." Said town manager Ron Whitehead, "You can get caught up in the excitement of this kind of thing because it's so neat."

—*Preservation News*,  
November 1982



"Somewhere in there is an old house screaming to get out."

# Our First Crossword Puzzle

---

by *Agnesa Lufkin*

---

## Across

1. Horizontal wood members between vigas and dirt roof.
9. Dark-hued, somber.
12. Conclusion or judgment.
13. Wall-strengthening structure.
17. Fireplace.
18. Building designer.
19. Constructed.
20. Day.
21. Small drink.
23. Possessive pronoun.
24. Ornamental projection (architecture).
26. Dispatched.
27. Northern New Mexico City.
28. Foundations.
30. Hog heaven.
31. Hebrew high priest and namesakes (abbr.).
33. The Hill.
35. Translucent sheet.
36. Sicilian volcano.
38. Pocket change in France.
40. Cherry red.
42. White (Spanish).
43. Mortise and
44. Exist.
45. New sectarians.
46. Theatre box.
47. Heating fuel.
48. Supporting member (arch.).
49. Organic substance, insoluble in water.
50. Bulk.
51. Ungentle.
52. Ajar.
53. Rope.

## Down

1. Finished underside (arch.).
2. Porch (with article).
3. Supporting roof members.
4. Prepared for anything (Latin abbr.).
5. Baseball team.
6. " , lookie there, ain't she pretty!"
7. Chemistry abbr. for tin.
8. Conduits.
9. Prefix before "fling" and "pend."
10. Craft.
11. Legal documents.
13. Alloy of copper.
14. Article.
15. Mask.
16. A group of lines of verse.
18. Building mud.
22. Sangre de Cristos (abbr.).
24. Built-in furniture.
25. Applied color.
28. First Europeans in New Mexico.
29. Pointed window.
30. Street named for Sigurd's foster father.
31. Gypsum whitewash.
34. Below a wall (with article).
36. Between triglyphs in a Doric frieze.
37. Cardinal number.
39. Wives of rajahs.
41. Hard plaster.
42. Mr. movies hoover (abbr.).
44. Low tone.
46. Edge.
47. Helium.
49. Hi's buddy.
50. Pa's buddy.

## 1982 Christmas Lighting Contest Winners

---

### East Side

First Prize:

David Batts  
#2 Plaza Fatima  
Robert & Sybil Saam  
512 Camino del Monte Sol

Second Prize:

William Gilbert  
1021 Bishop's Lodge Road

Third Prize:

Robert Lovato  
822½ East Zia Road  
The Josephs and Rodriguezes  
1340 & 1342 Canyon Road

Honorable Mention:

Group:

### West Side

First Prize:

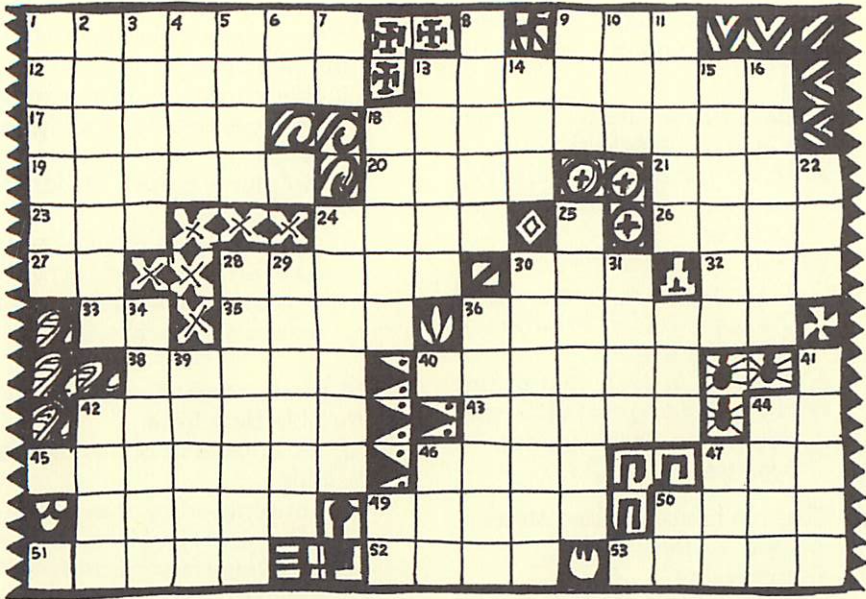
Steve Trujillo  
2375 Camino Pintores  
Park Plazas Homeowners' Association  
Berardinelli Mortuary, 1399 Luisa

Group:

**Commercial**



# PUZZLE




---

## 1983 Board of Directors

---

### EXECUTIVE COMMITTEE

Chairman Louann C. Jordan  
 Vice-Chairman Myra Ellen Jenkins  
 Treasurer Constant Chapman  
 Secretary Jordie Chilson

George Ewing  
 Richard Grenfell  
 Pen LaFarge  
 Agnesa Lufkin  
 Barbara Martin  
 A.B. Martinez, Jr.  
 Ed Ortega

### MEMBERS AT LARGE

Ken Bateman  
 John Baxter  
 Saul Cohen

EXECUTIVE SECRETARY/  
 PROPERTY MANAGER  
 Claudia Smith-Porter

---

HELP! The Foundation is searching for a volunteer-writer to write articles for the *Bulletin* and other projects. Volunteers are also needed for Loretto Chapel and historic research.

Mary Jean Cook has been commissioned by the Inn at Loretto to

write the history of Our Lady of Light Chapel which will be published this fall. She is looking for a photo of the Chapel in the process of construction, as well as any heretofore unknown facts. If you can help her, please call 982-9524.

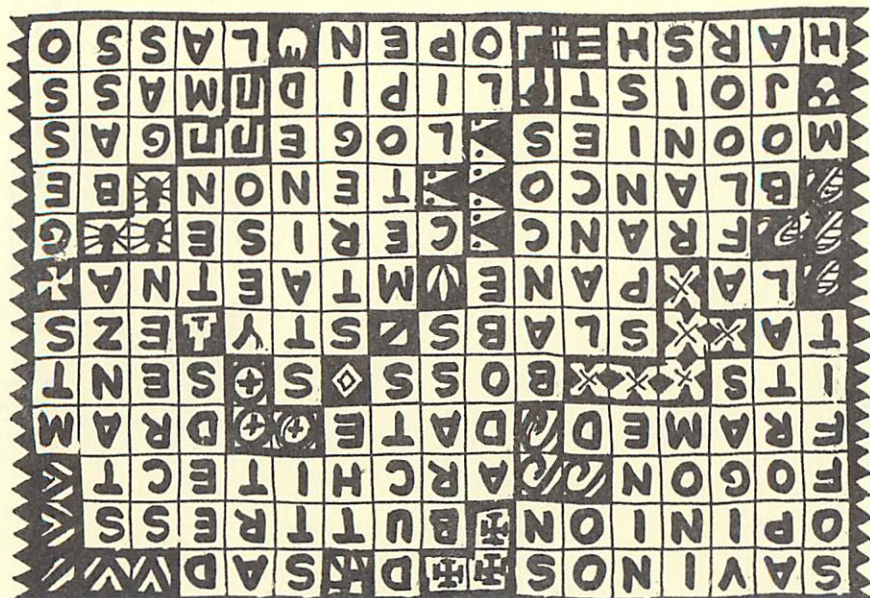
# Are You A History Buff?

Are you really a history buff or just toying with the idea? The following quiz will give you a clue to your status.

1. Finding yourself in the proximity of a famous battlefield, you
  - a. go on the all-day tour with a box lunch from Colonel Sanders.
  - b. take some friends with you whom you coerce into playing the opposing forces while you direct the battle.
  - c. drive out and get your picture taken standing next to the sign.
  - d. decide to let bygones be bygones.
2. That old house on your street is, in your opinion,
  - a. an eyesore.
  - b. a good rental property.
  - c. an unusual example of the rare architectural style, "Hide-bound Vernacular."
3. If a factual but tedious history book is at hand, you
  - a. read it cover to cover without putting it down.
  - b. read it in spurts, frequently putting it down.
  - c. don't pick it up.
4. When someone says he has been "in the archives," he means he
  - a. went deep-sea fishing.
  - b. has been suffering from extreme depression.
  - c. has eyestrain from microfilm and hay-fever from dusty documents.
5. "Queen Anne," "Mansard" and "Romanesque" are
  - a. This year's new rock groups.
  - b. next fall's new dress styles.
  - c. Julia Child's new ways to serve potatoes.
  - d. none of the above.
6. When you arrive in a new city, the first thing you do is
  - a. check to see if your "wanted" poster is already up at the post office.
  - b. look for a branch of Bergdorf Goodman.
  - c. find out if any outlaws and/or captains of industry bequeathed a nineteenth-century mansion for a museum.
7. A careful researcher gets his most reliable facts from
  - a. his great-aunt on his mother's side.
  - b. contemporary newspapers controlled by political factions.
  - c. a visiting Harvard professor.
  - d. intuition.
  - e. none of the above.
8. Basic research requires
  - a. long late-night discussions over a bottle of jug red.
  - b. trips to Washington (the Smithsonian), and New York (the Metropolitan)
  - c. comfortable shoes and a ham sandwich.
  - d. all of the above.
9. The most important function of a library is
  - a. to provide the new novels so you don't have to pay fifteen dollars for a piece of trash.
  - b. to provide a warm place for indigents to rest between muggings.
  - c. to prevent anyone checking out any books by keeping them under glass.
  - d. to perpetuate an obscure code called "the Dewey Decimal System."

—Agnesa Lufkin

# ANSWERS



## Membership Renewal Time Is Here

Just a reminder to all of our members that dues for 1983 are now current. Those of you who have already sent them in, we thank you. Should any member not have received their renewal card you may call our office at 983-2567 between 9:00 a.m. and 1:00 p.m. and another will be sent to you. Or you may use the one on this page to mail into the office. Perhaps you have a friend whom you think would like to be a member—just pass along the application form. We welcome one and all.

NAME \_\_\_\_\_

ADDRESS \_\_\_\_\_ ZIP \_\_\_\_\_

**THE HISTORIC SANTA FE FOUNDATION**  
P.O. BOX 2535 Santa Fe, New Mexico 87501

ANNUAL MEMBERSHIP DUES, 19 \_\_\_\_\_

Individual . . . . .	\$ 6.00	_____	SPECIAL CONTRIBUTION: To
Husband and Wife . . . . .	10.00	_____	help preserve the historic buildings
Commercial . . . . .	15.00	_____	and sites of Santa Fe . \$ _____
Sustaining . . . . .	50.00	_____	TOTAL (Income Tax
Life . . . . .	1,000.00	_____	(Deductible) . . . . \$ _____

I would like to volunteer