

Sheet 32

Sheet 30

State Engineer's Office,  
Santa Fe, New Mexico.

**SANTA FE HYDROGRAPHIC SURVEY**  
S.S. Carroll, Asst. Engineer in charge  
Topography & Hydrography by Haynes Howell  
Scale: 1 in. = 100 ft.  
Sheet No. 31 of 42 Sheets

Approved:

*Juan S. ...*  
State Engineer



11402-462

Sheet # 31



State Engineer's Office,  
Santa Fe, New Mexico.

**SANTA FE HYDROGRAPHIC SURVEY**

S. S. Carrvill, Asst. Engineer in charge,  
Topography & Hydrography by Haynes Howell.  
Scale: 1 in. = 100 ft.  
Sheet No. 32 of 42 Sheets.

Approved:

*James O. Stevens*  
State Engineer.

N

Irrigation Ditch Del Pino (No. 11)

Irrigation Ditch No. 11

Irrigation Ditch Lateral

Irrigation Ditch No. 31

Road

School

Raw Land

Plowed Ground

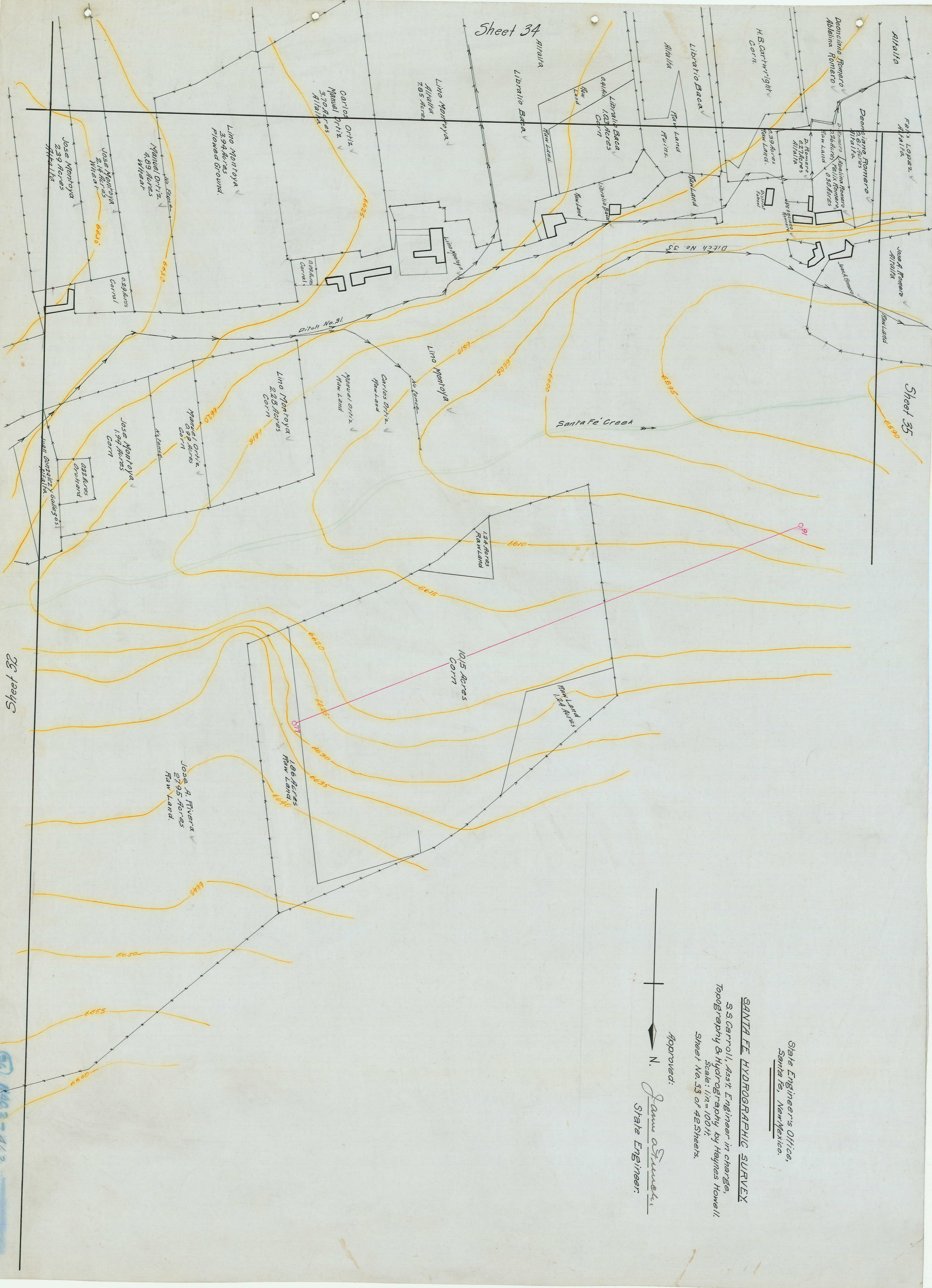
Sheet 33

Sheet 31

Sheet 31

35 11402-462

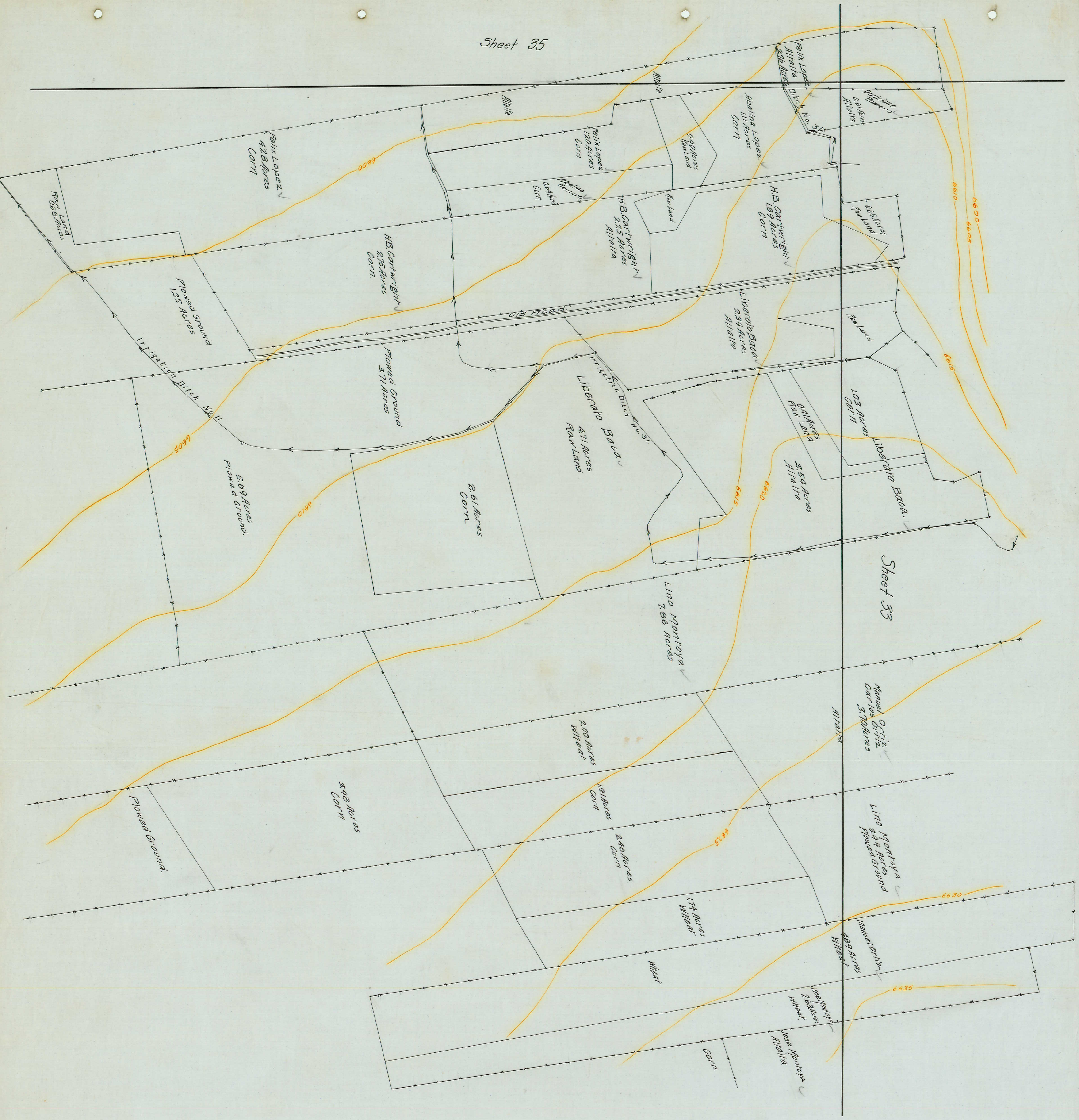
Sheet # 32



State Engineer's Office,  
 Santa Fe, New Mexico.

**SANTA FE HYDROGRAPHIC SURVEY**  
 S. S. Carroll, Asst. Engineer in charge,  
 Topography & Hydrography by Haynes Howell  
 Scale: 1 in = 100 ft.  
 Sheet No. 33 of 42 Sheets.

Approved: *J. A. Sturtevant*  
 State Engineer.



State Engineers Office,  
Santa Fe, New Mexico.

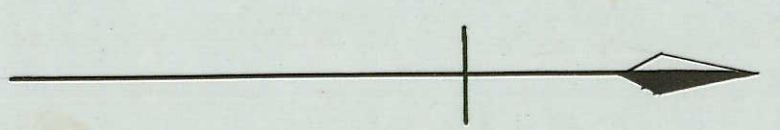
**SANTA FE HYDROGRAPHIC SURVEY.**

S. S. Carroll, Assist. Engineer in charge,  
Topography & Hydrography by Haynes Howell.

Scale: 1 in. = 100 ft.  
Sheet No. 34 of 42 Sheets.

Approved:


*Jam. Struelens*  
State Engineer.





State Engineers Office,  
Santa Fe, New Mexico.

SANTA FE HYDROGRAPHIC SURVEY  
S.S. Carroll, Asst. Engineer in charge,  
Topography & Hydrography by Haynes Howell.  
Scale: 1 in = 100 ft.  
Sheet No. 35 of 42 Sheets.

Approved:  N.  
James A. Travel, State Engineer.

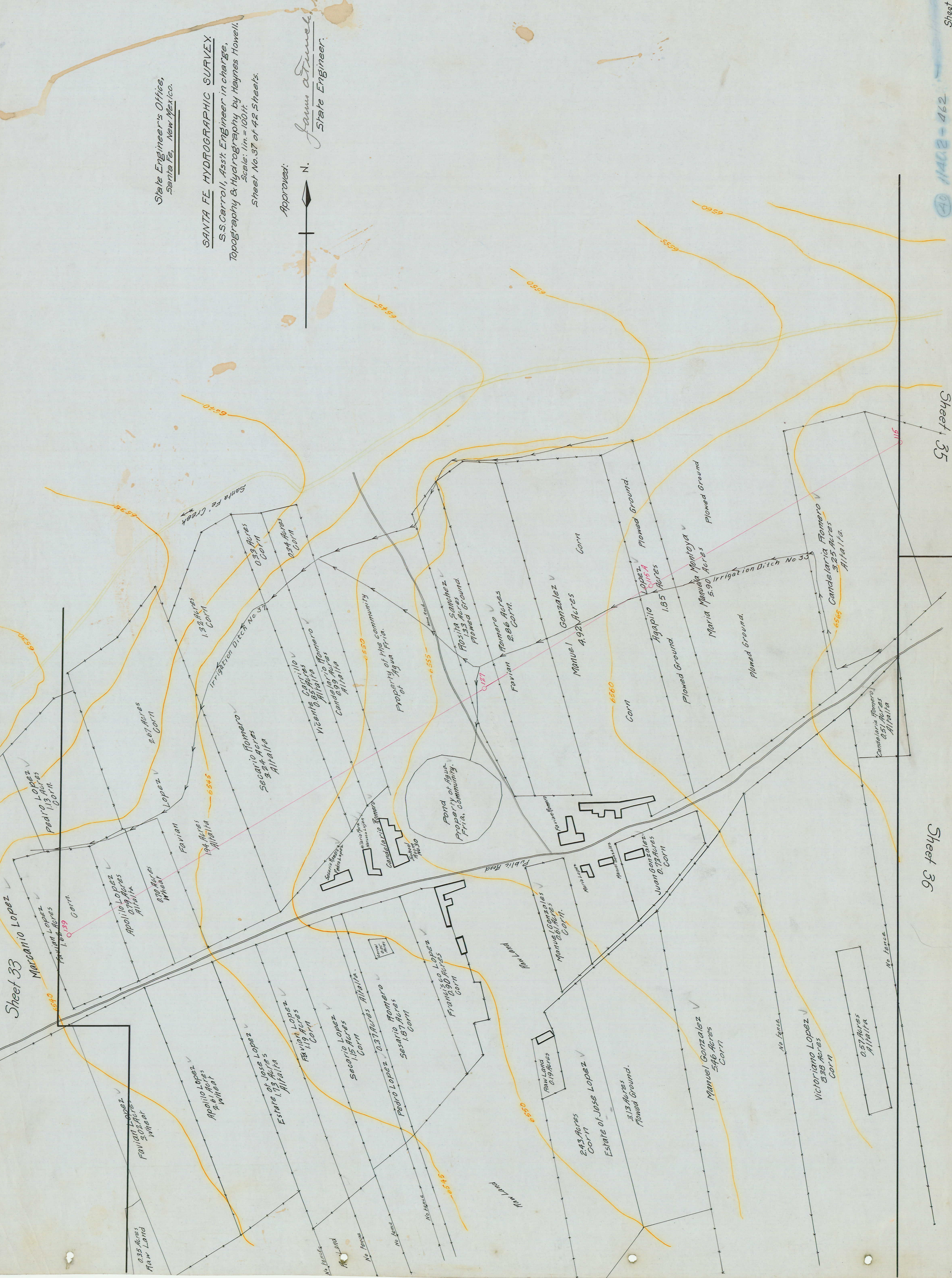


Sheet 33

Sheet 35

Sheet 36

Sheet 37



State Engineer's Office,  
Santa Fe, New Mexico.

**SANTA FE HYDROGRAPHIC SURVEY**  
S.S. Carroll, Asst. Engineer in charge,  
Topography & Hydrography by Haynes Howell.  
Scale: 1 in. = 100 ft.  
Sheet No. 37 of 42 Sheets.

Approved:

*Jam. Atmel*  
State Engineer.



11402-462

State Engineers Office,  
Santa Fe, New Mexico.

SANTA FE HYDROGRAPHIC SURVEY

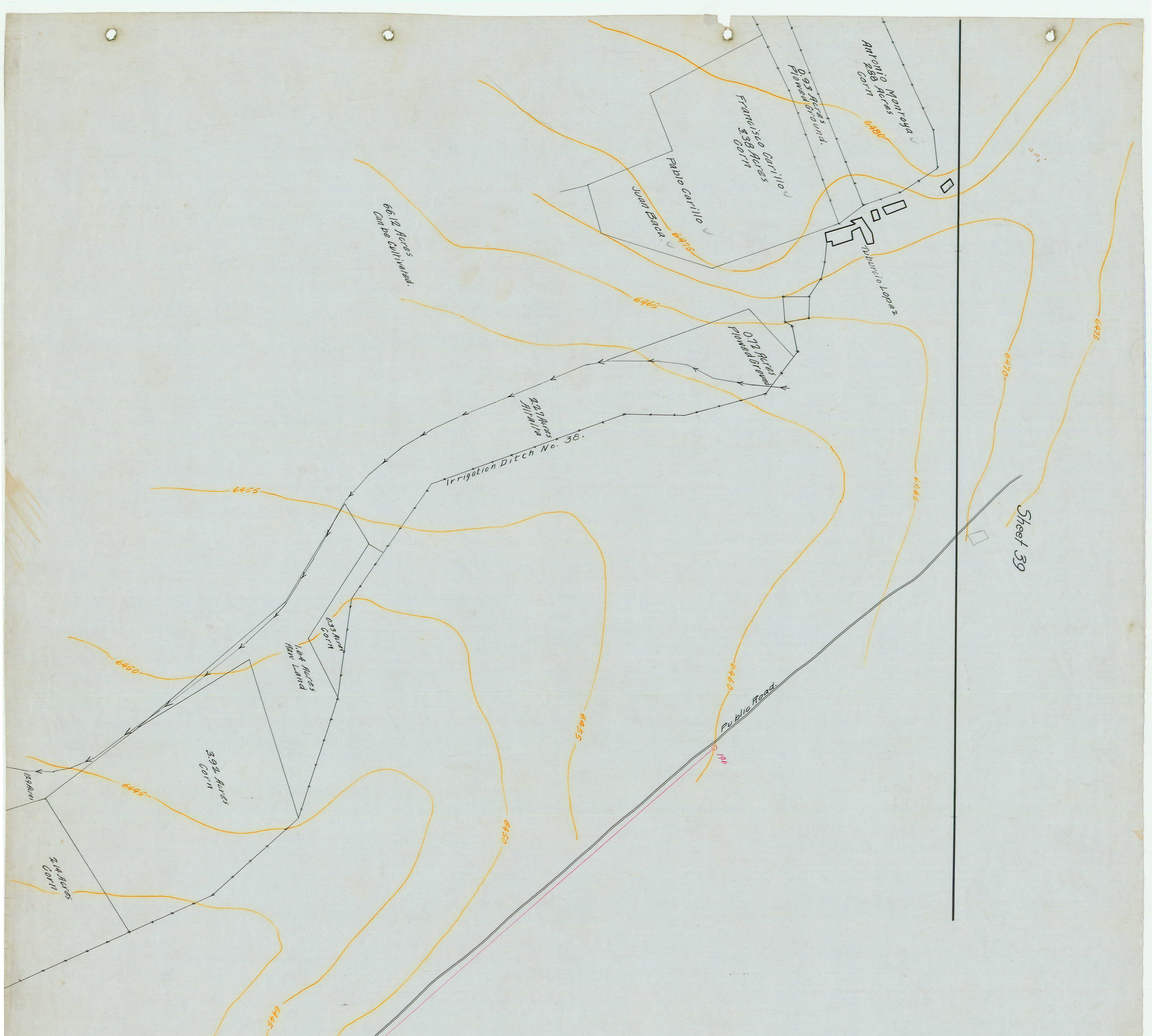
S.S. Carroll, Asst. Engineer in charge,  
Topography & Hydrography by Haynes Howell,  
Scale: 1 in = 100 ft.  
Sheet No. 38 of 42 Sheets

Approved: *Law Sturdevant*  
State Engineer.

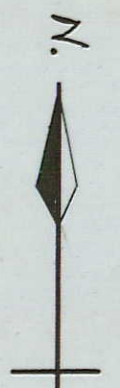








Sheet 39



State Engineer's Office,  
Santa Fe, New Mexico.

**SANTA FE HYDROGRAPHIC SURVEY.**  
S. S. Carroll, Assist. Engineer in charge,  
Topography & Hydrography by Haynes Howell.  
Scale: 1 in. = 100 ft.  
Sheet No. 40 of 42 Sheets.

Approved: *James A. Fremont*  
State Engineer.

11402-462

Sheet # 40

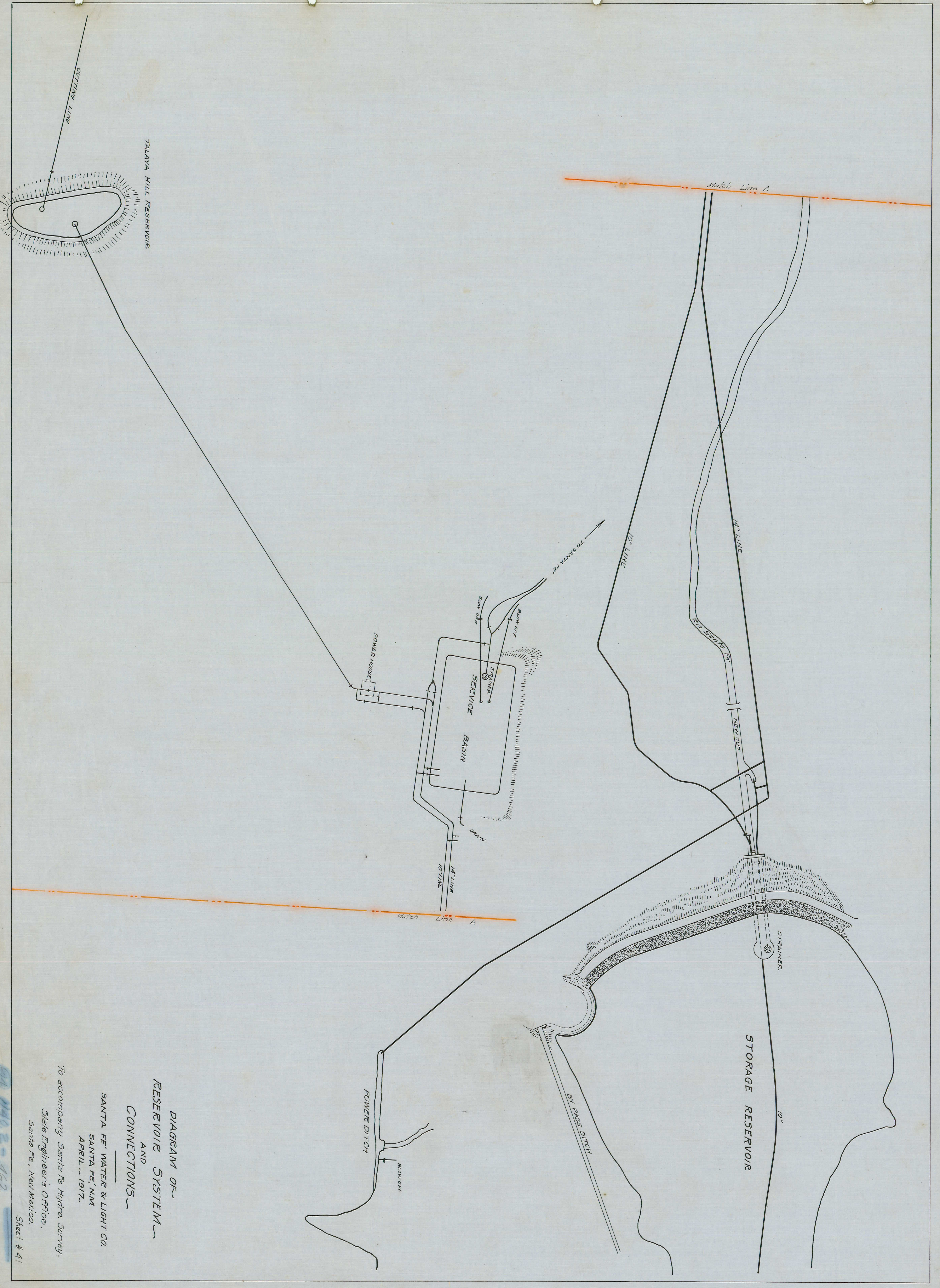


DIAGRAM OF  
RESERVOIR SYSTEM  
AND  
CONNECTIONS

SANTA FE WATER & LIGHT CO.  
SANTA FE, N.M.  
APRIL ~ 1917.

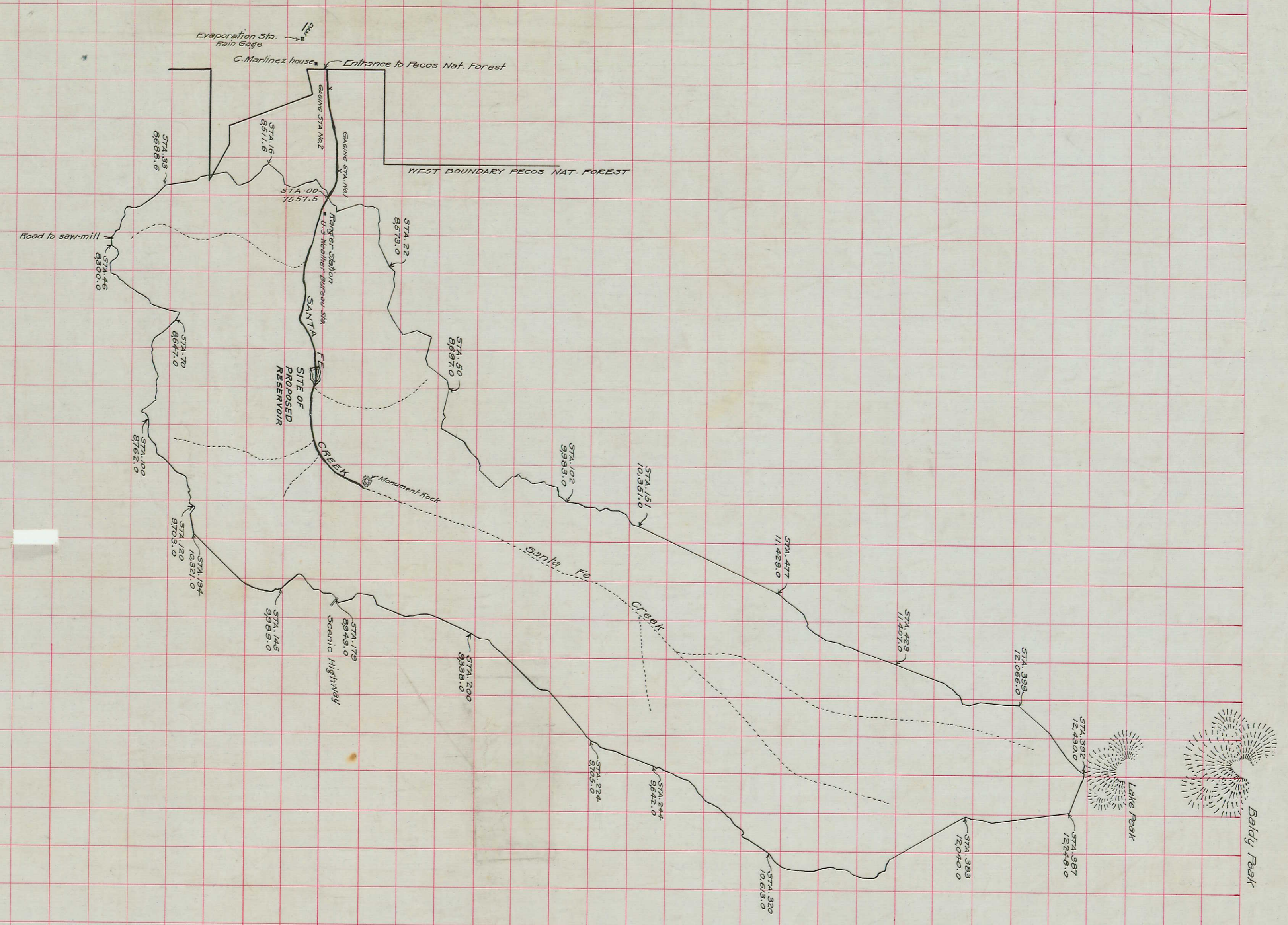
To accompany Santa Fe Hydro. Survey.  
State Engineers Office,  
Santa Fe, New Mexico.

24 1140 2 - 462

160,000 EAST  
170,000 E  
180,000 E  
190,000 E  
200,000 E  
212,000 E

70,000 N.  
80,000 N.  
90,000 N.  
100,000 N.  
110,000 N.  
120,000 N.  
130,000 NORTH

**DRAINAGE AREA**  
OF  
**SANTA FE CREEK**  
ABOVE  
**CITY RESERVOIR**  
SCALE: 1" = 4000'



SCALE - 1 INCH = 4000 FT.