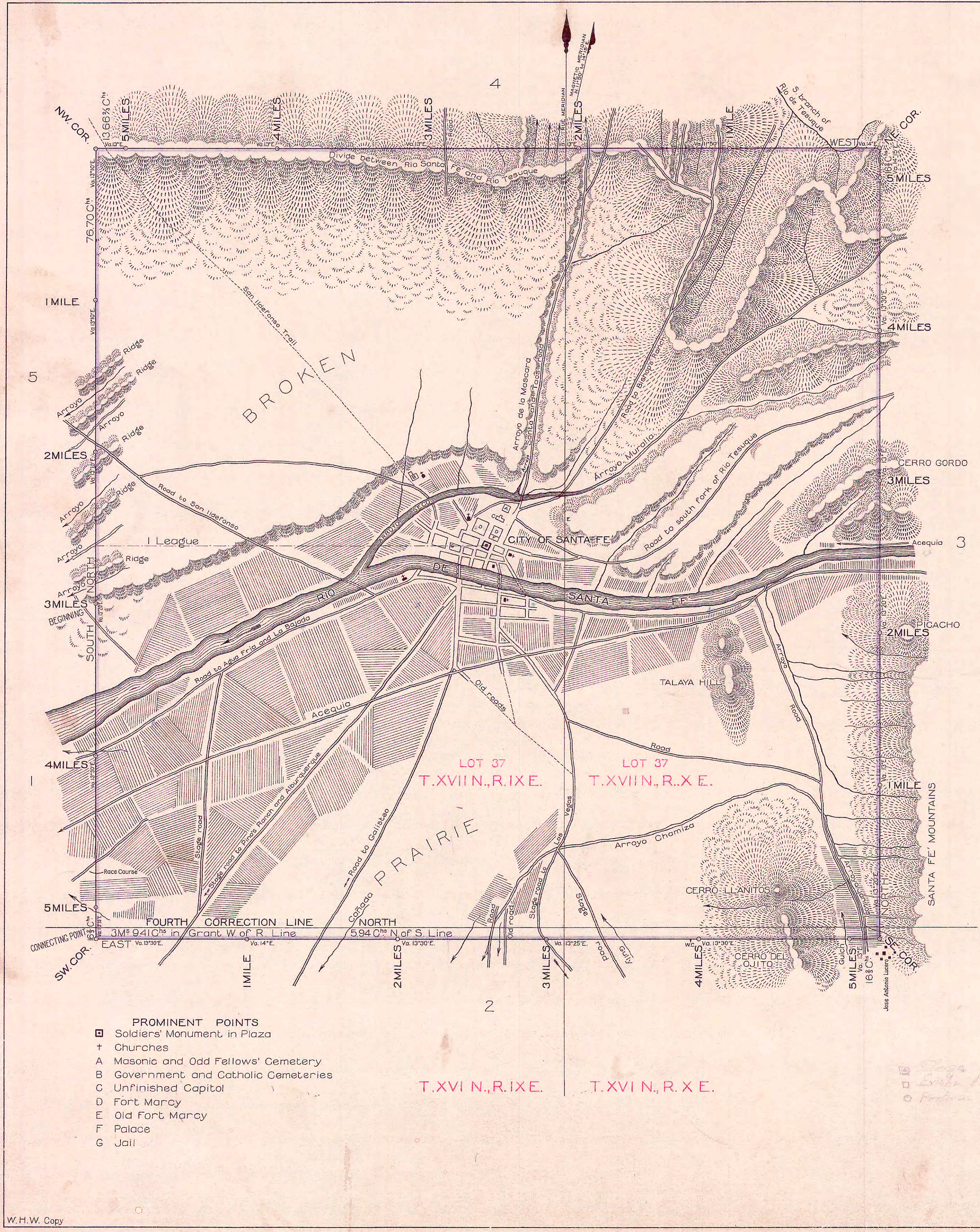


17. *Survey on file*



PLAT
of the
CITY OF SANTA FE' GRANT.
Surveyed by Griffin and M^{rs} Mullen, U. S. Deputy Surveyors,
September 1877.

Scale: 2 Inches to 1 Mile

BOUNDARIES

Numbers	Courses	Distances in Chs.
1	SOUTH	2 16%
2	EAST	5 16%
3	NORTH	5 16%
4	WEST	5 13.66%
5	NORTH	2 76.70
Aggregate		20 60.36%

ACCOUNT FOR COST
For surveying and platting Private Land Claim Number 88-
the City of Santa Fe' Grant, furnished the General Land Office
by the Surveyor General of New Mexico under Commissioner's
Instructions of June 29, 1877:

Cost of Surveying	\$ 416.20
Cost of Platting	70.00
Total	\$ 486.20

CITY OF SANTA FE' GRANT

NUMBER	GRANTEE	GRANT APPROVED	DESCRIPTION			ACRES
			LOT	TOWNSHIPS	RANGES	
88	The Community of SANTA FE'	April 13, 1874	37	16 and 17 N.	9 and 10 E.	17,361.11

The Field Notes of the Survey of the CITY OF SANTA FE' GRANT,
from which this Plat has been made, have been examined and approved
and are on file in this office.

Surveyor General's Office,
Santa Fe, New Mexico,
July 5, 1878.
Henry M. Atkinson
United States Surveyor General.

I certify that in compliance with instructions contained in letter G
(S.W.W.), dated Jan. 17, 1901, from the Hon. Com. of the G.L.O., I have
changed the length of the North body of this grant from 5 Ms.,
13.56% Chs., to 5 Ms., 13.66% Chs. and the aggregate from 20 Ms., 60.26% Chs.,
to 20 Ms., 60.36% Chs., in the table on this plat.

U.S. Sur. Gen'l's Office,
Santa Fe, N.M., Jan. 25, 1901.
Quincy Vance
U.S. Surveyor General.

CERTIFICATE
I certify that this plat of the "CITY OF SANTA FE' GRANT" is a
true and correct copy of the original plat of said grant on file in
this office. This plat has been reproduced on account of the dilapidated
condition of the original plat.

U.S. Surveyor General's Office,
Santa Fe, N.M., Jan. 23, 1913.
W. March
U.S. Surveyor General.

- PROMINENT POINTS**
- Soldiers' Monument in Plaza
 - † Churches
 - A Masonic and Odd Fellows' Cemetery
 - B Government and Catholic Cemeteries
 - C Unfinished Capital
 - D Fort Marcy
 - E Old Fort Marcy
 - F Palace
 - G Jail