

SANTA FE

Santa Fe County NEW MEXICO SANBORN MAP CO. NEW YORK JAN. 1930

Published by the Sanborn Map Co.
APR 14 1931

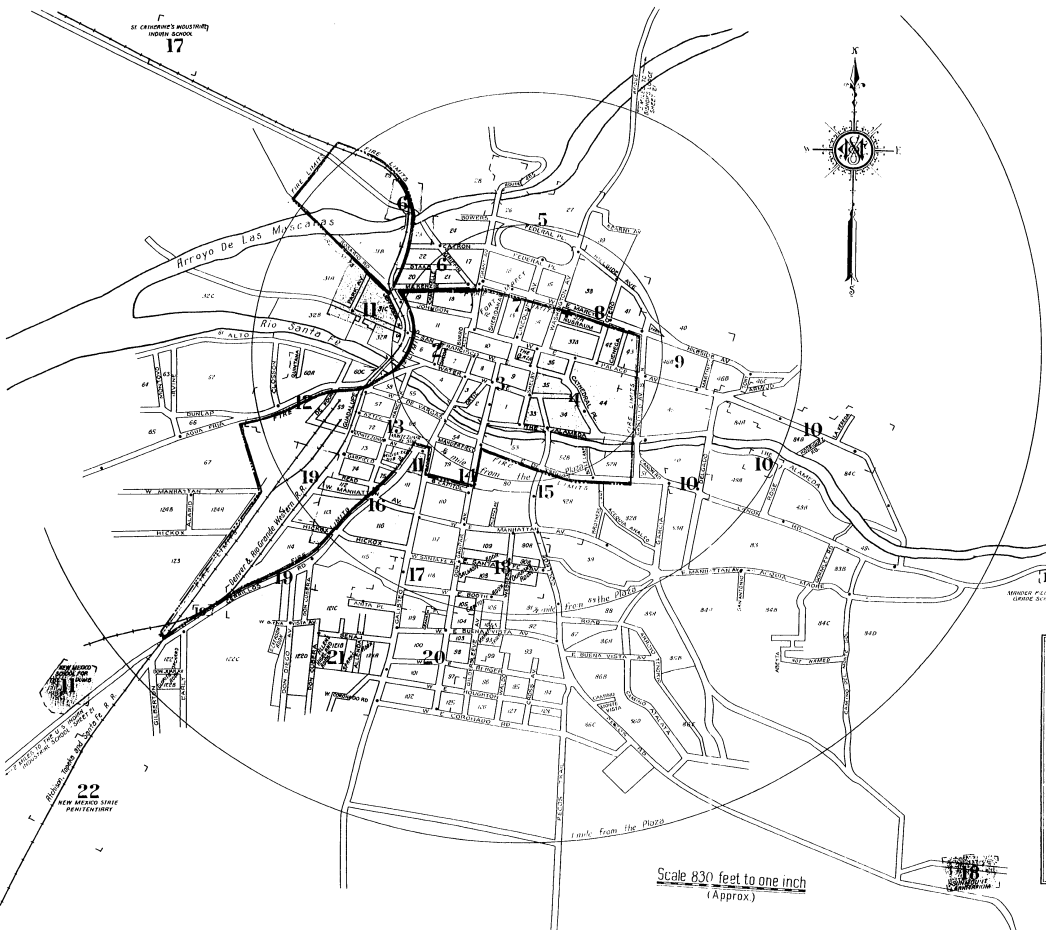
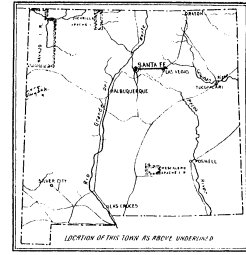
Population: 8,500 - Prevailing Winds: N. & N.W.

WATER FACILITIES:
 Main water system: three reservoirs, highest crest of town...
FIRE DEPT:
 Local: four...
 Fire: four...
 Fire: four...

Scale 830 feet to one inch (Approx)

KEY

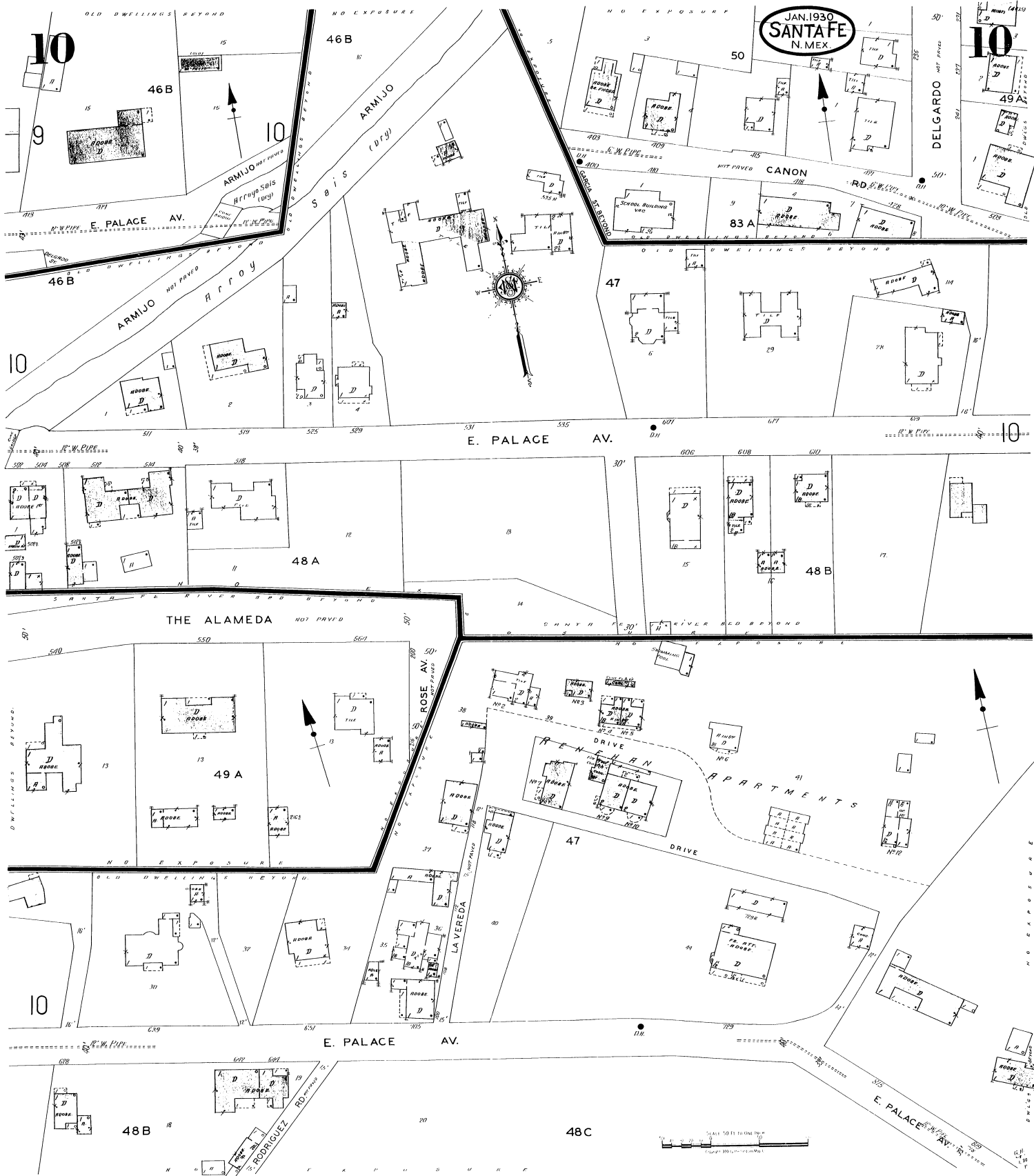
CONCRETE BLOCK
 BRICK
 PLASTER
 STONE
 ...
 ...
 ...



INDEX

STREETS		H		P		L	
Agua Fria, A	200-241 12	Coronado Road, E	20-21	Hancock, H	200-209 2	Water, W.	200-330 2
Alameda, The, A	300-311 18	De Four, de	20-21	Hickox, H	210-423 13	Webber, W.	500-619 18
Allandale, A	100-110 12	De Vargen, E	20-21	Hillside, H	220-403 16	SPECIALS	
Anita Place, A	200-248 21	Delgado, D	20-21	Houghton, E	230-335 16	Allison-James School, A	2
Aqua Fria, see Agua Fria	201-247 17	Don Cabelero, D	20-21	Johnson, J	236-353 19	Alvarado Hotel, A	10
Armijo, A	300-341 15	Don Diego Ave., D	20-21	Kearney, K	200-409 9	Army, A	2
Bartlett, see N. Castillo Ave.	100-161 20	Don Gaspar Ave., D	20-21	Kernan, K	100-147 11	B. P. O. E. Building, B	7
Berger, E., S. Castillo Ave.	100-131 20	Federal, F	5 & 7	La Vereda, L	200-231 21	Bishop's Lodge Co., Tourists Resort., B	21
Booth, E., W.	100-149 17	Galsteo, G	5 & 7	Linedale, L	200-449 10	Boyle Floral Co., B	12
Bowers, B	50-38 22	Garfield, G	5 & 7	Lincoln, L	200-462 10	Boy Scout, B	15
Boyle Lane, B	400-421 21	Grant Ave., G	5 & 7	Linscott, L	208-314 11	Camp de Vargas, Tourist Camp, C	16
Buena Vista Ave., E	422-440 21	Griffin, G	5 & 7	Luisa, L	200-341 6	Capital Coal Yards, C	10
Burro Alley, B	423-431 19	Guadalupe, G	5 & 7	Madison, M	201-211 12	Capitol Hotel, C	10
Cannon Road, C	50-38 22	Hancock, H	20-21	Mantle, M	201-211 12	Chavez, M., Roman Catholic School, C	16
Capitol, S., near Manderfield	100-121 9	Hickox, H	20-21	Martinez, M	201-211 12	Church of the Holy Faith (Episcopal), C	9
Castillo Ave., N.	100-221 9	Hillsdale, H	20-21	McKenzie, M	201-211 12	City Hall, C	3
Cathedral, see Cathedral Place.	50-38 22	Houghton, E	20-21	Manderfield, M	201-211 12	Continental Oil Co., C	10
Catron, C	50-38 22	Hickox, H	20-21	Mantle, M	201-211 12	Coronado Hotel, C	8
Cerrillos Road, C	400-426 13	Hickox, H	20-21	Manhattan, M	201-211 12	County Court House, C	4
Clayton, C	400-426 13	Hickox, H	20-21	Marquette, M	201-211 12	Jail, J	2
College, C	501-507 15	Hickox, H	20-21	Marquette, M	201-211 12	De Vargas Hotel, D	3
Closson, C	508-514 18	Hickox, H	20-21	Martinez, M	201-211 12	D. & R. G. W. R. R. Depot, D	10

* Indicates only one side of Street shown.



JAN. 1930
SANTA FE
N. MEX.

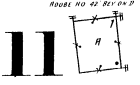
II

13

14

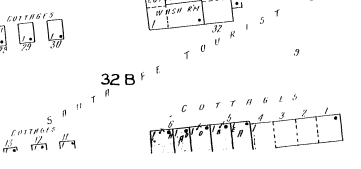
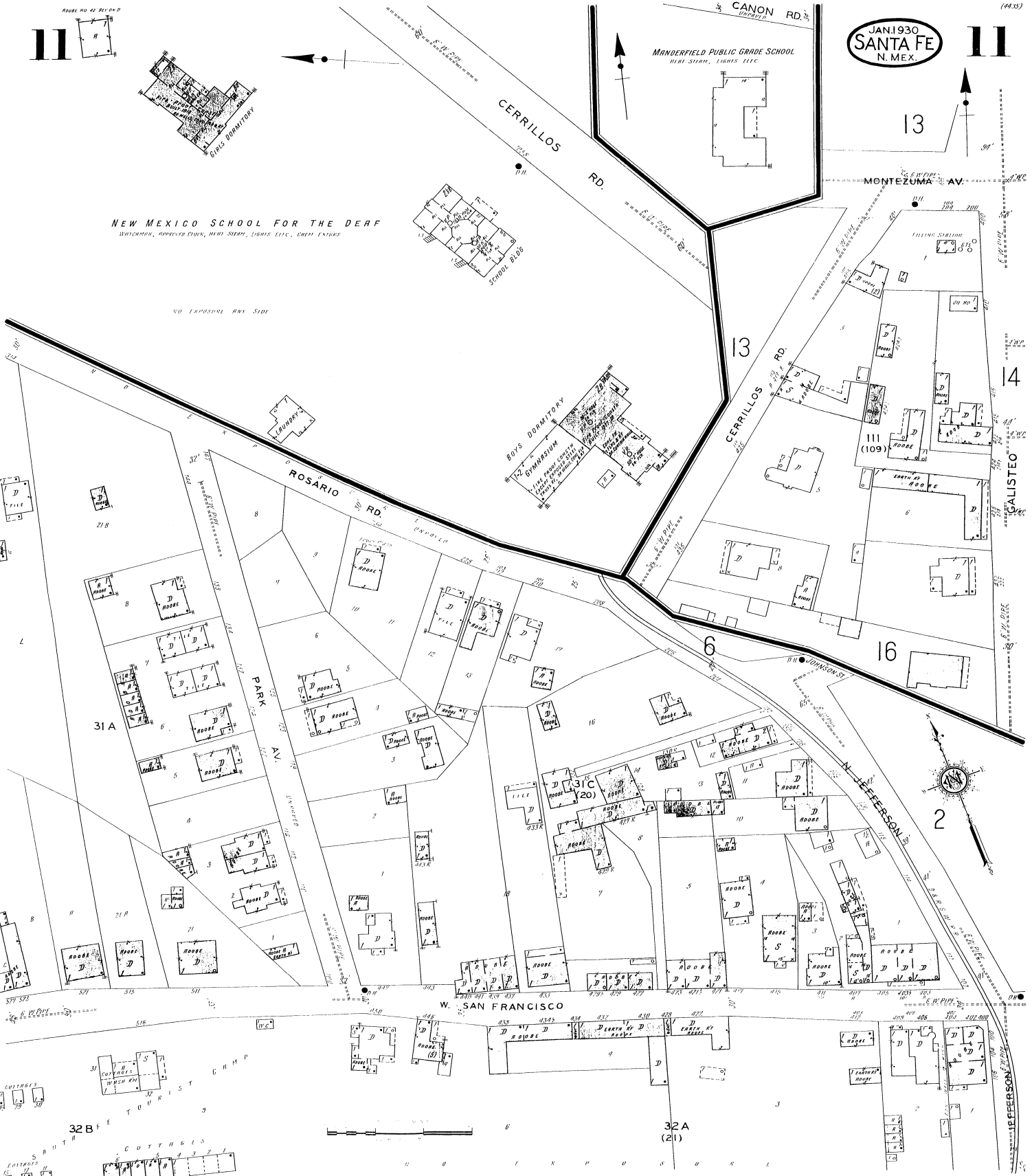
16

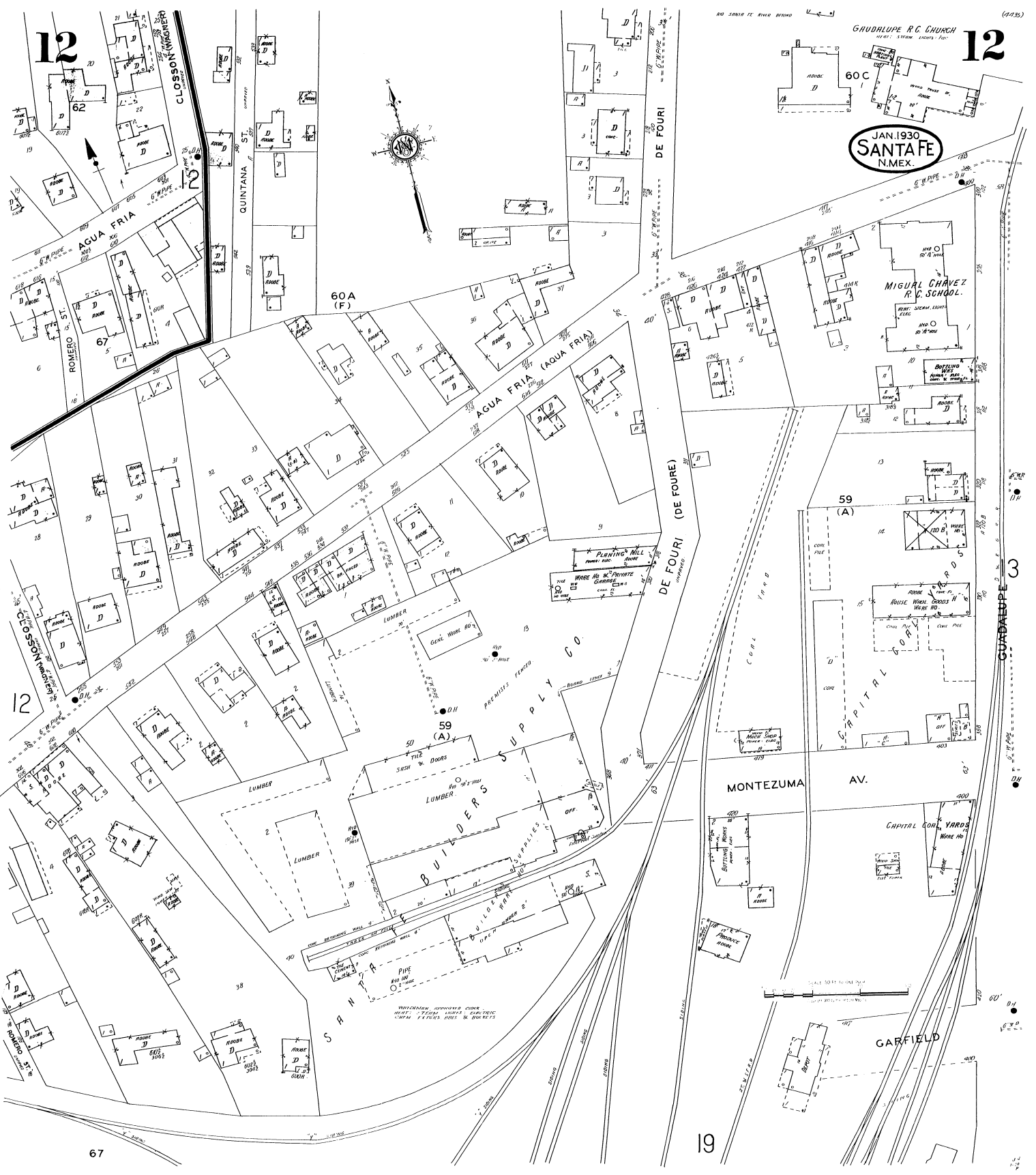
2



NEW MEXICO SCHOOL FOR THE DEAF
WATCHMEN, APPROVED DUCK, HEAT STEAM, LIGHTS ETC., OPEN EXPOSURE

NO EXPOSURE ANY SIDE





12

12

JAN. 1930
SANTA FE
N.MEX.



SCALE 50 FT. TO ONE INCH

67

19

3

60A (F)

59 (A)

59 (A)

MONTEZUMA AV.

CAPITAL CON. YARDS

GARFIELD

BUILDERS SUPPLY CO.

MIGUEL CHAVEZ R.C. SCHOOL.

GUDALOPE R.C. CHURCH

CLOSSON (WAGONER)

AGUA FRIA

AGUA FRIA (AGUA FRIA)

DE FOURI (DE FOURE)

DE FOURI

QUINTANA ST.

ROMERO ST.

CLOSSON (WAGONER)

GUADALUPE

WHOLESALE REFRIGERATOR CORP.
HINT: STEAM, LIGHTS, ELECTRIC
LUMEN, PATENTS, WIRE & PIPES

PLUMING MILL

WARE HO. & PRIVATE CONCRETE

GEN. WARE HO.

OH

59 (A)

SHED & DOORS

LUMBER

OFF.

WARE HO.

PIPE

AND WARE

HO.

DOOR

DOOR

DOOR

DOOR

DOOR



60C

AGUA FRIA (AQUA FRIA)

58

2

Rio Santa Fe River

W DE VARGAS

56 (E)

AZTEC

72 (E)

GUADALUPE

HANCOCK

MONTEZUMA AV.

GARFIELD

6

CERRILLOS RD.

GALISTEO

4

76 (108)

GARAGE

C.P.F. 500 CHAS. CONG. FL.

HEAT FURN. LIGHTS: FLEC

STEEL PARTS. HANDSPUN WOLLS



Rio Santa Fe

14

14

JAN. 1930
SANTA FE
N. MEX.

W. DE VARGAS

54
(101)
GOVERNOR'S MANSION

53
(22)

MANDERFIELD

STATE OF NEW MEXICO CAPITOL BUILDINGS

79

Fire Proof Construction
- Built 1912 -
Cons. Floors & Roof
Re. Walls.

Fire Proof Construction
- Built 1912 -
Cons. Floors & Roof
Re. Walls.

80
(23)

13

GALISTEO

DON GASPAR AV.

15

S. CAPITOL (CHAVES)

110
(102)

BAPTIST CHURCH
- Built 1912 -
Cons. Floors & Roof
Re. Walls.

81
(23)

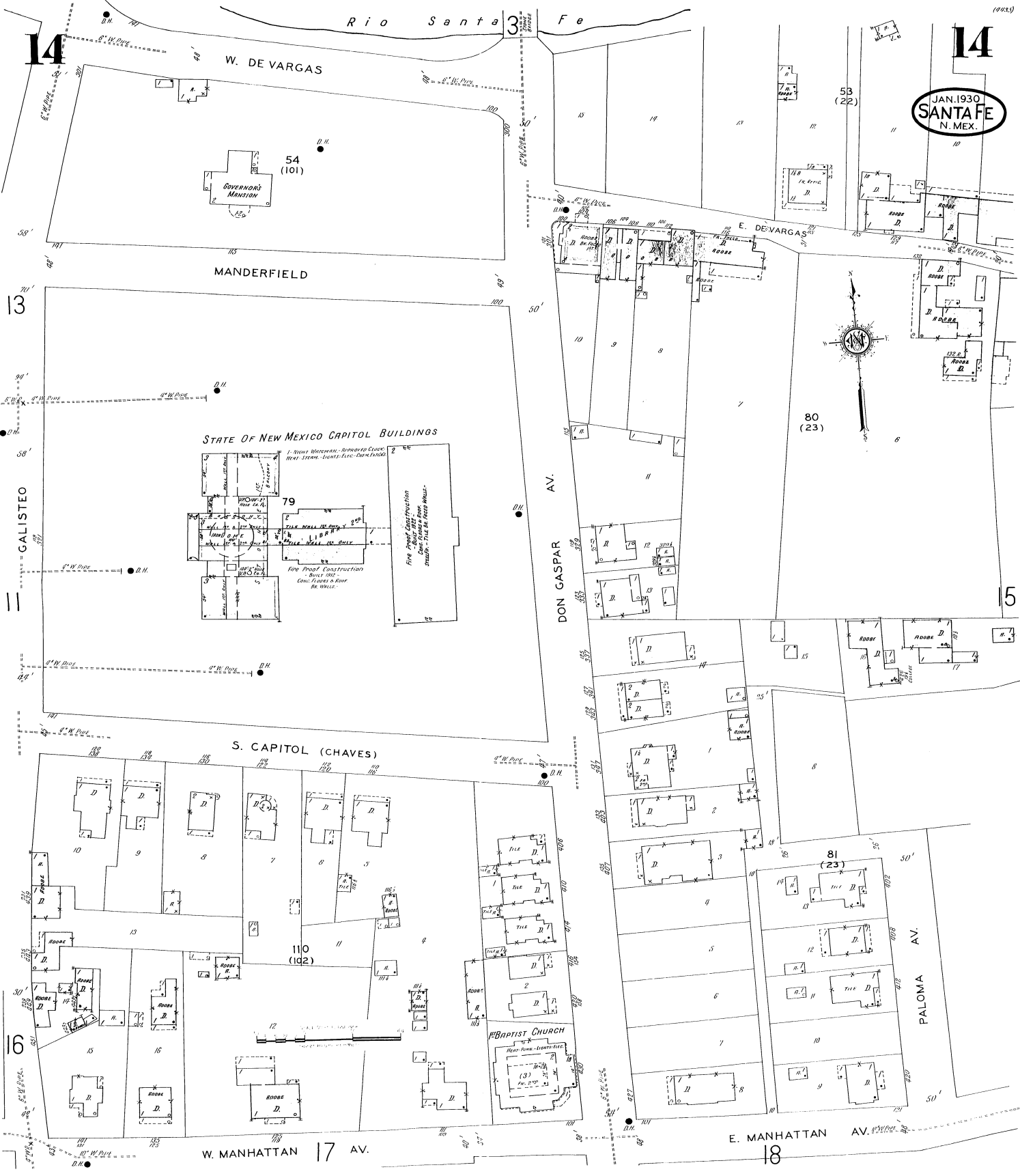
PALOMA AV.

16

W. MANHATTAN AV.

E. MANHATTAN AV.

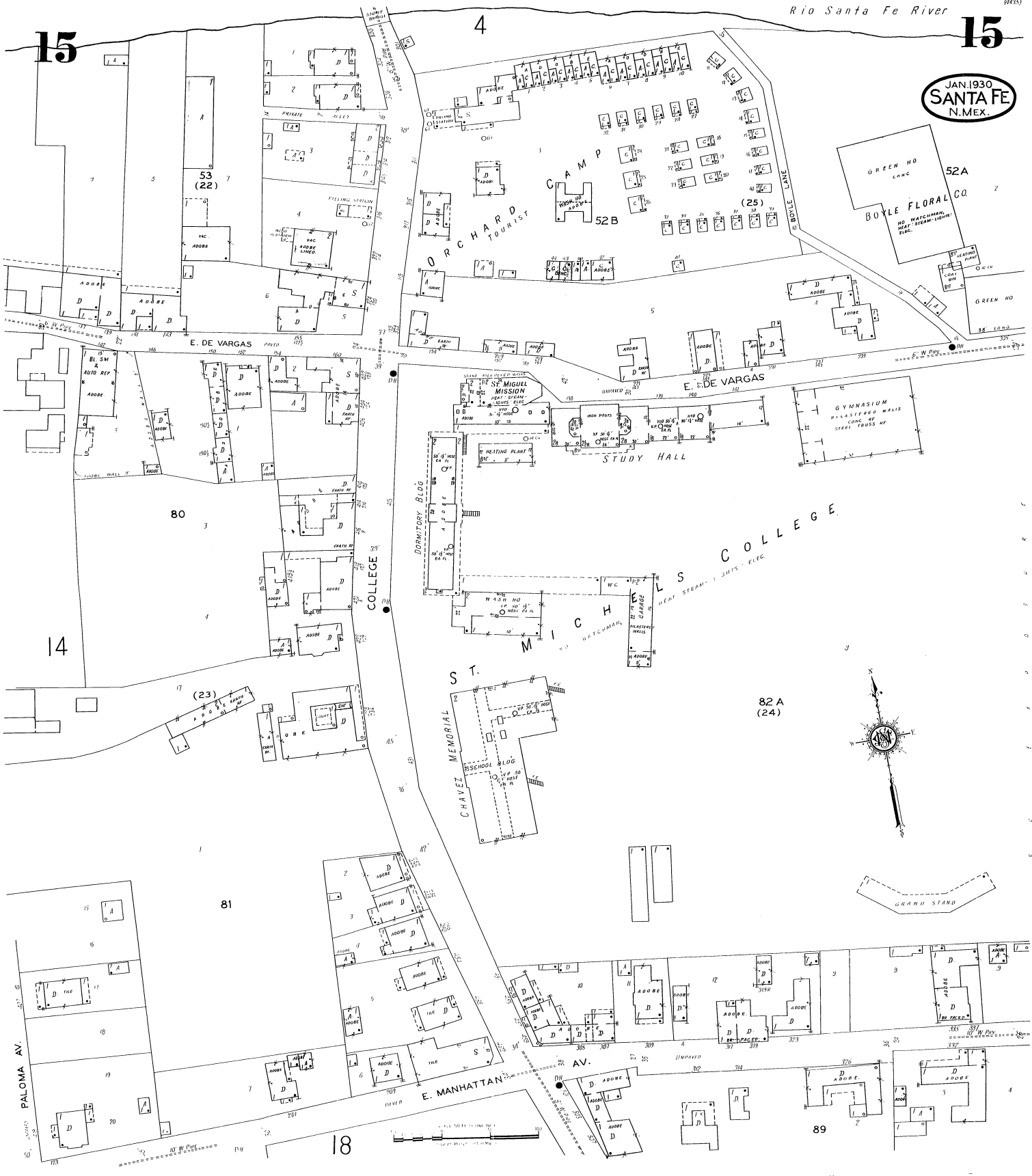
18



15

15

JAN 1930
SANTA FE
N.MEX.



53 (22)

ORCHARD

CAMP

52A

BOYLE FLORAL CO.

80

14

(23)

82A (24)

18

89

PALOMA AV.

E. DE VARGAS

E. DE VARGAS

COLLEGE

CHAVEZ MEMORIAL

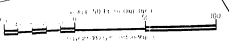
S.T.

MICHEL

E. MANHATTAN

AV.

GRAND STAND



S. Capitol St
16

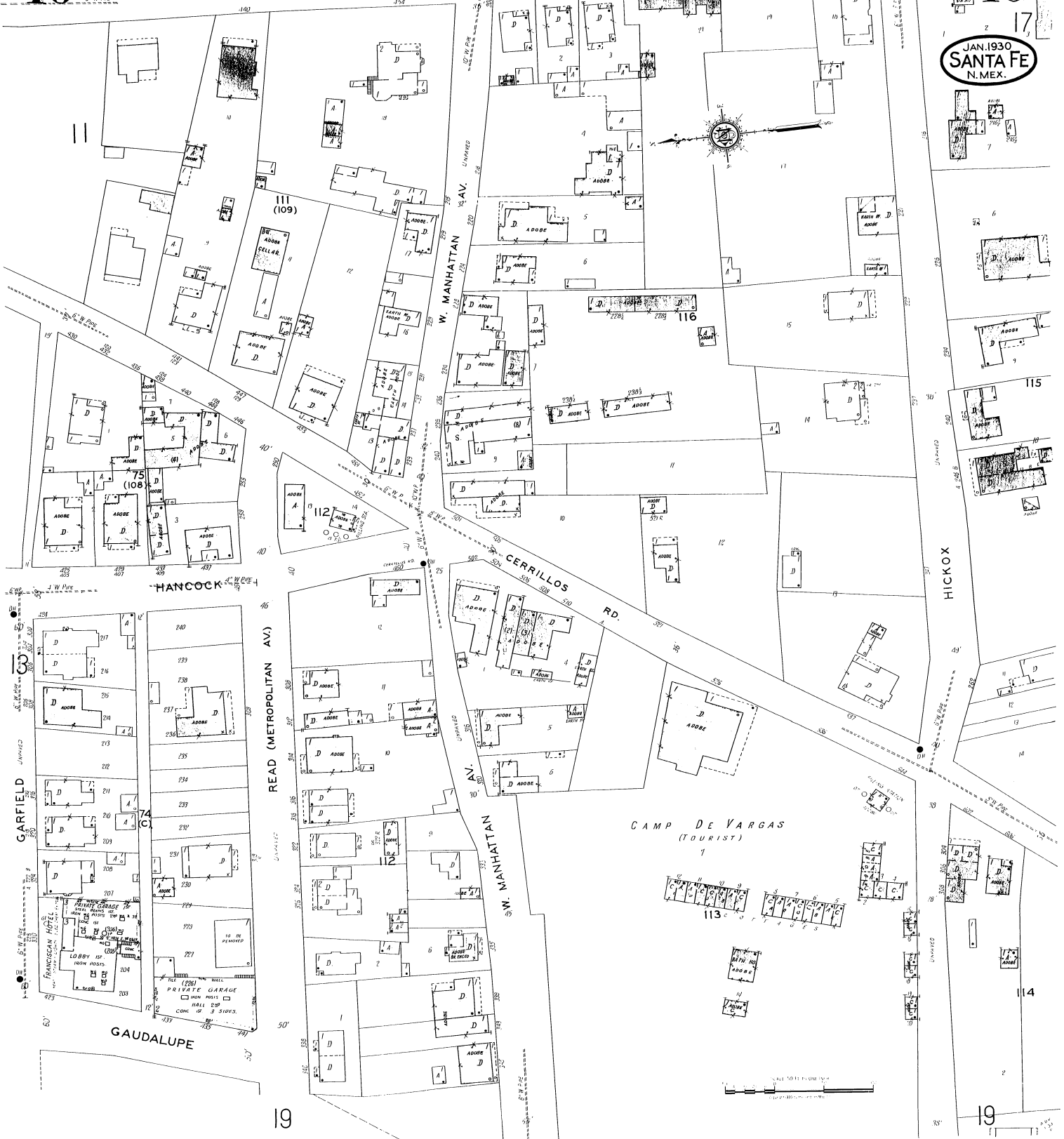
14

GALISTEO

17

10

JAN. 1930
SANTA FE
N. MEX.



19

19

CAMP DE VARGAS
(TOURIST)

113

114

115

111 (109)

112

116

GAUDALUPE

GARFIELD

HANCOCK

READ (METROPOLITAN AV.)

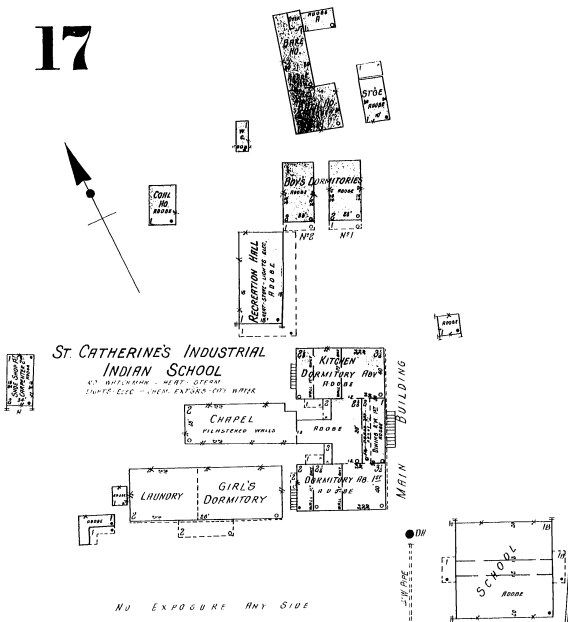
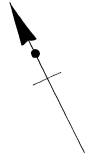
W. MANHATTAN

W. MANHATTAN

HICKOX

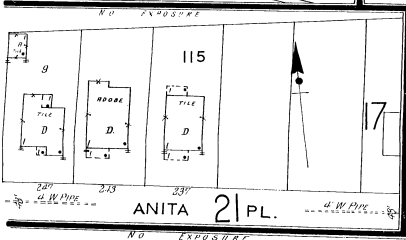
SCALE 50 FT. PER INCH

17



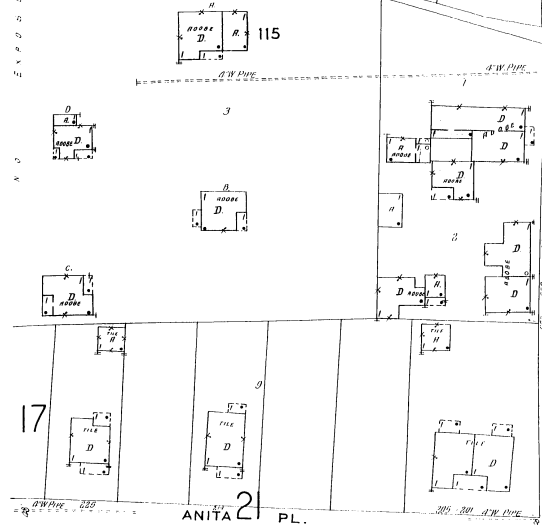
St. CATHERINE'S INDUSTRIAL INDIAN SCHOOL

NO EXPOSURE ANY SIDE

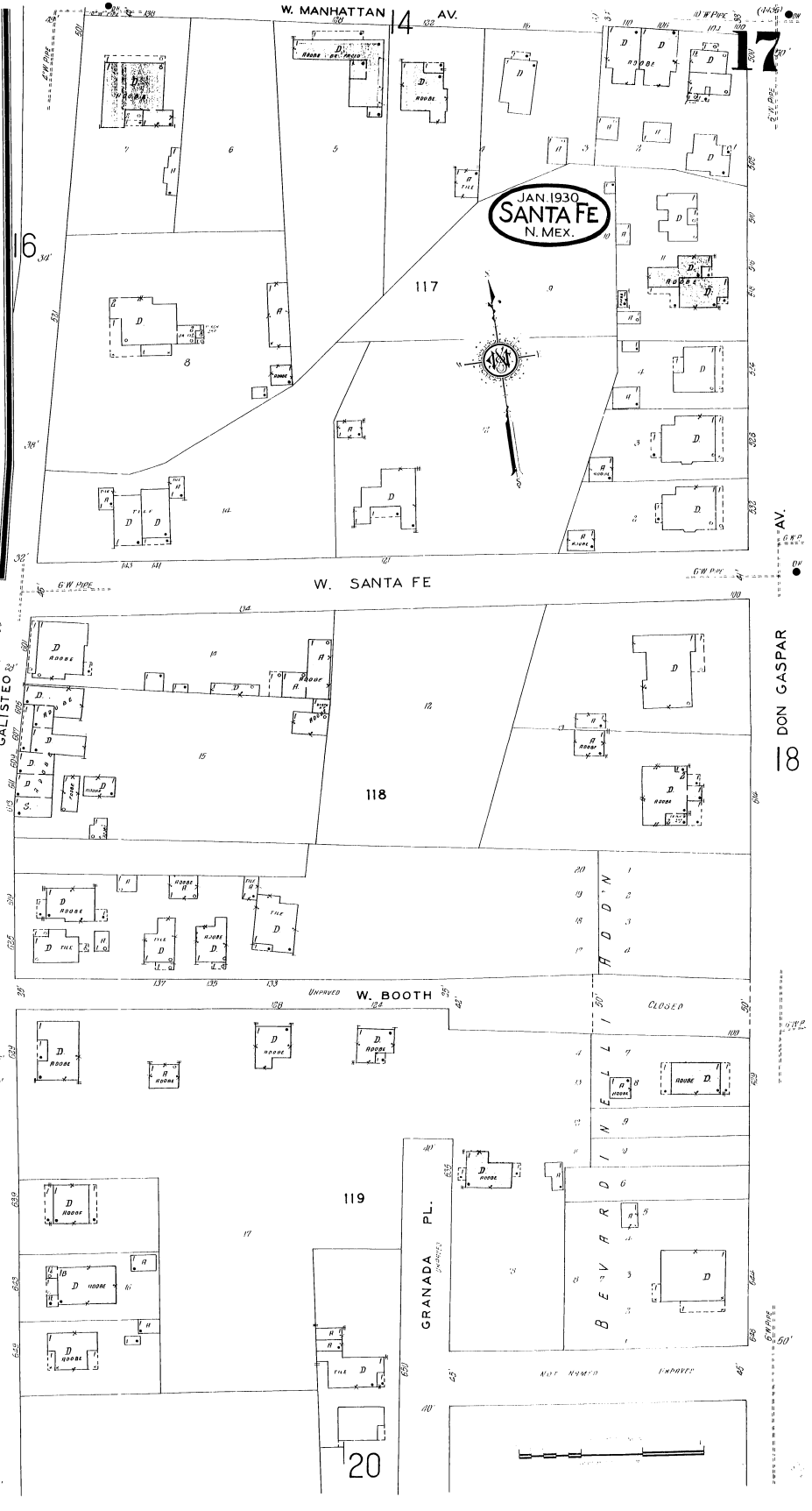


ANITA 21 PL.

NO EXPOSURE



ANITA 2 PL.



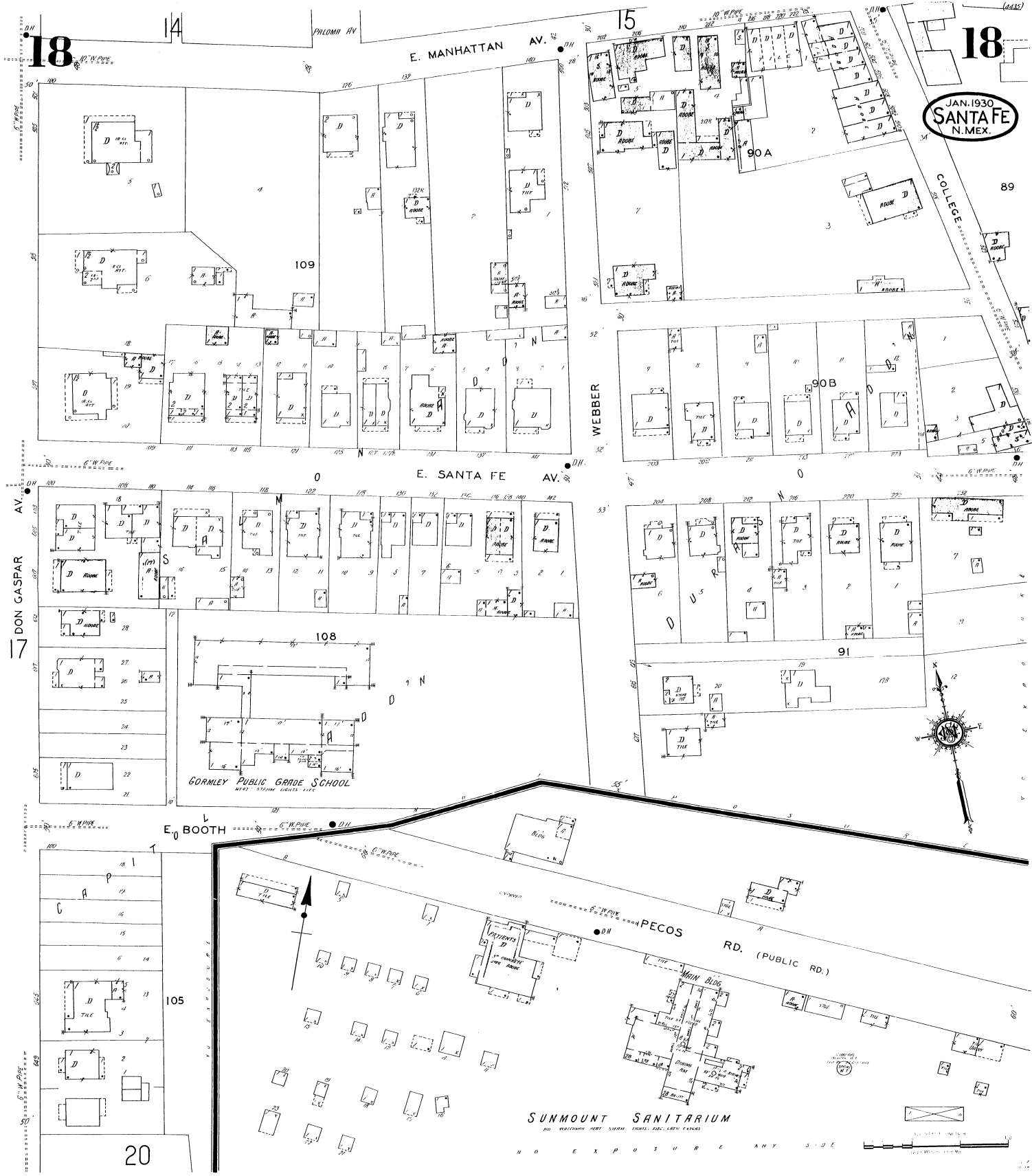
JAN. 1930. SANTA FE N. MEX.

18 DON GASPAR

18

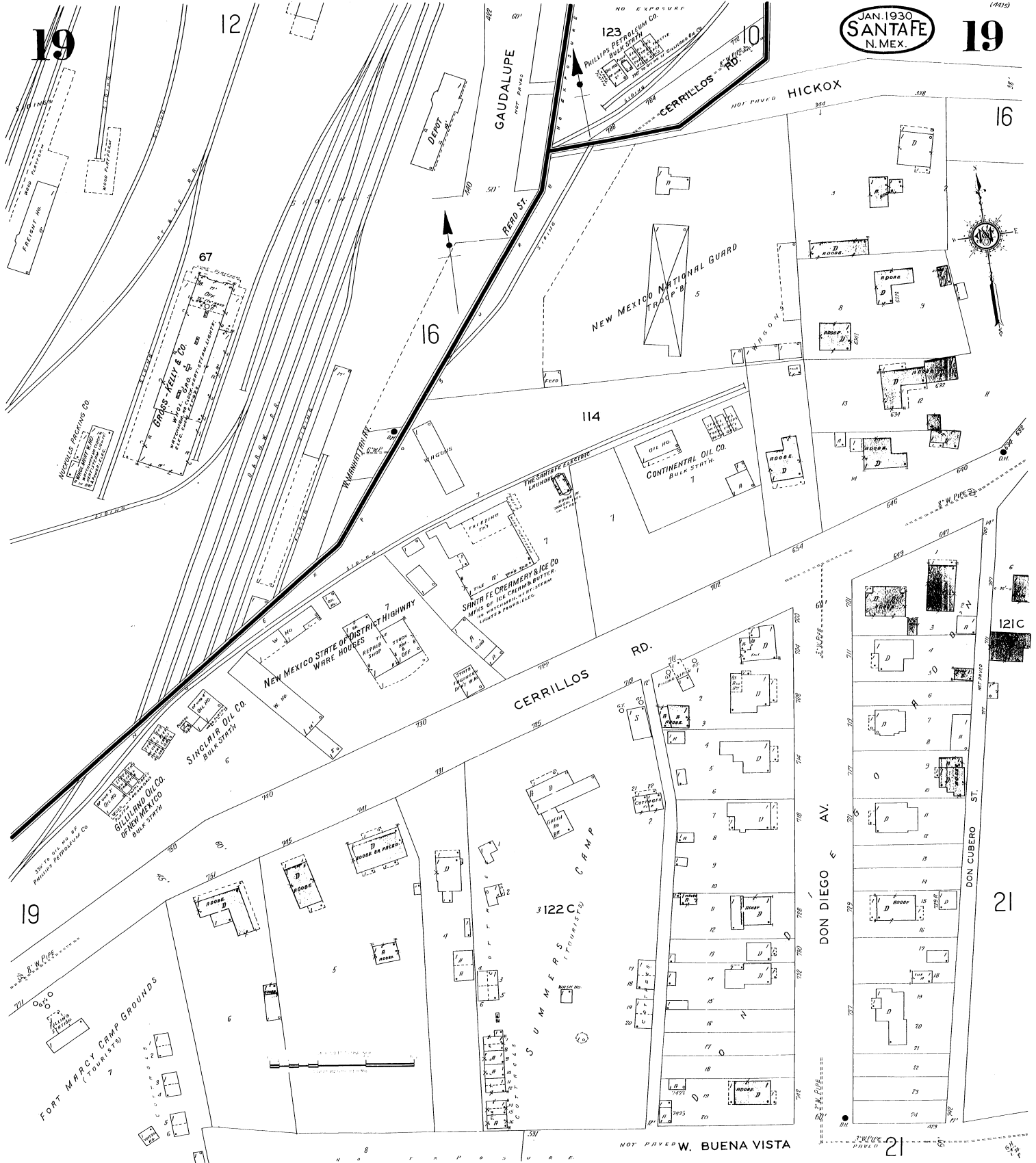
18

JAN. 1930
SANTA FE
N. MEX.



SUNMOUNT SANITARIUM

NO EXPOSURE ANY SIDE



GAUDALUPE

PHILLIPS PETROLEUM CO.
BULK STATION

CERRILLOS RD.

HICKOX

NEW MEXICO NATIONAL GUARD
TRAPP B

114

CONTINENTAL OIL CO.
BULK STATION

NEW MEXICO STATE OF DISTRICT HIGHWAY
WARE HOUSES

SANTA FE CREAMERY & ICE CO.
MAKERS OF ICE CREAM & BUTTER.
NO. 122 C CAMP

CERRILLOS RD.

121C

DON DIEGO AV.

DON CUBERO ST.

21

19

FORT MURPHY CAMP GROUNDS
(FOUNDRY)

NOT PAVED W. BUENA VISTA

21

2

2

JOHNSON

7
JAN. 1930
SANTA FE
N. MEX.

W. PALACE ST.



13

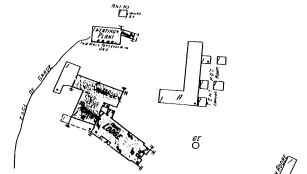
3

4
(13)

CLOSSON ST.

JAN. 1930
SANTAFE
N. MEX.





**The Bishop's Lodge Co.
Tourists Resort**

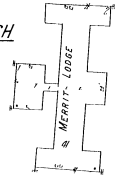
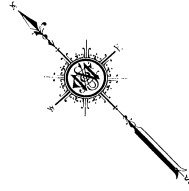
HEAT SYSTEM - LIGHTS - ELEC. - CUMM. EXPENSE
BUILT ON ROLLING GROUND

Located 4 miles N.E. of the Plaza

No Exposure Any Side

SCALE 100 FT TO AN INCH
ENVI. SHEET

JAN. 1930
SANTAFE
N. MEX.

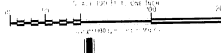


U. S. INDIAN INDUSTRIAL SCHOOL

HEAT SYSTEM - INDUSTRY - HEAT SYSTEM - LIGHTS - ELEC. - CUMM. EXPENSE

Located 2 miles S.W. of Plaza

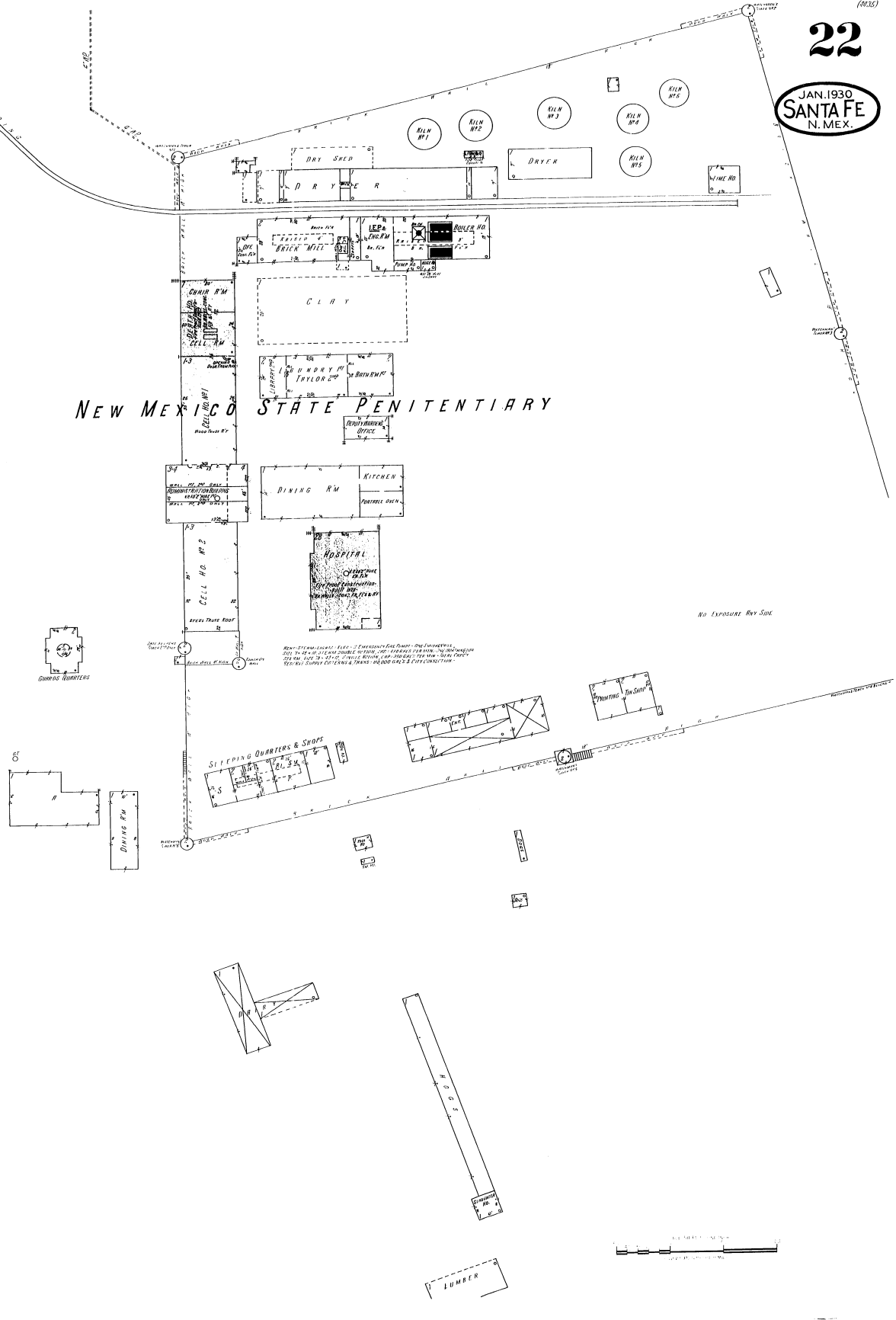
No Exposure Any Side



NEW MEXICO STATE PENITENTIARY

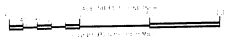


E. T. & S. I. P. P.



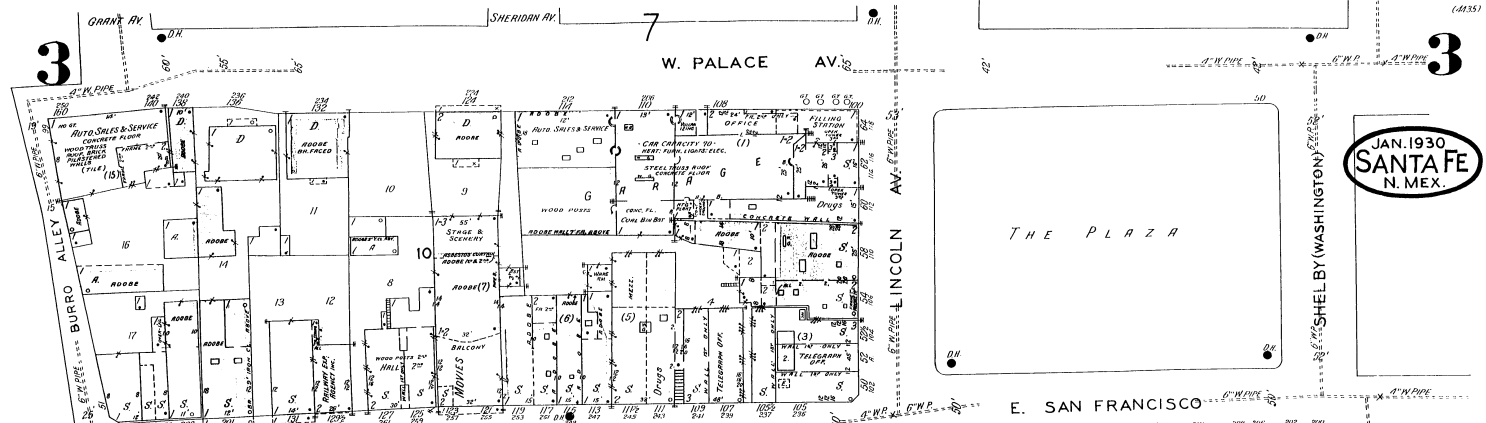
NEW MEXICO STATE PENITENTIARY
 PLAN OF THE PENITENTIARY BUILDING
 SHOWING THE LOCATION OF THE BUILDING AND THE POSITION OF THE
 BUILDING ON THE SITE OF THE PENITENTIARY
 THE PLAN IS A PLAN OF THE PENITENTIARY BUILDING AND NOT A PLAN OF THE
 PENITENTIARY SITE AND NOT A PLAN OF THE PENITENTIARY SITE

NO EXPOSURE BY SIDE



3

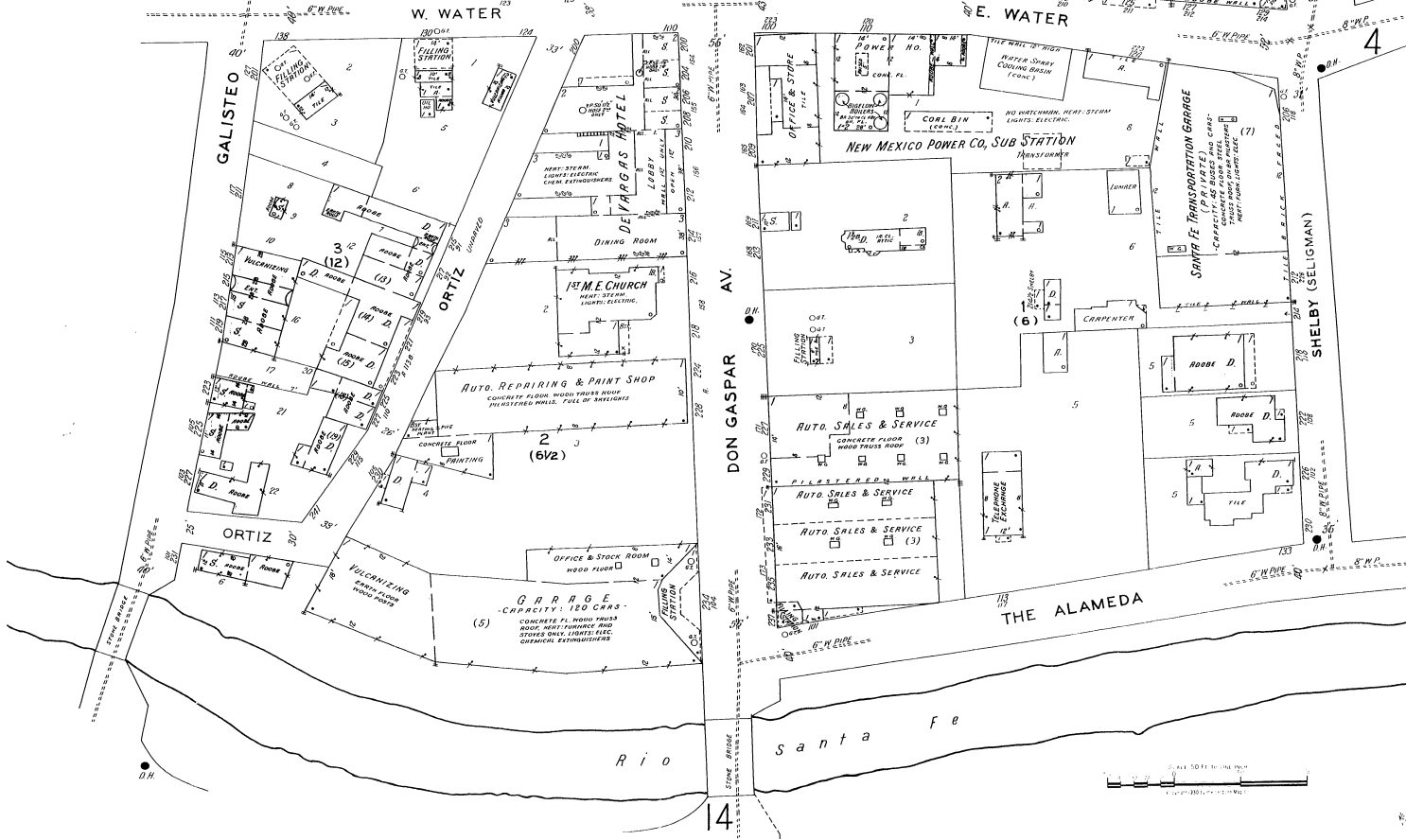
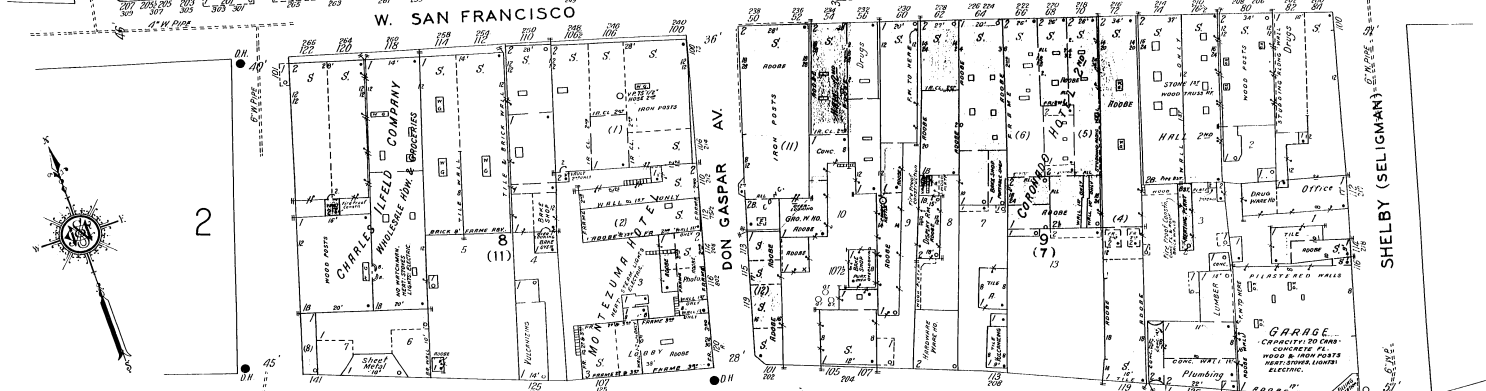
3



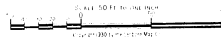
JAN. 1930
SANTA FE
N. MEX.

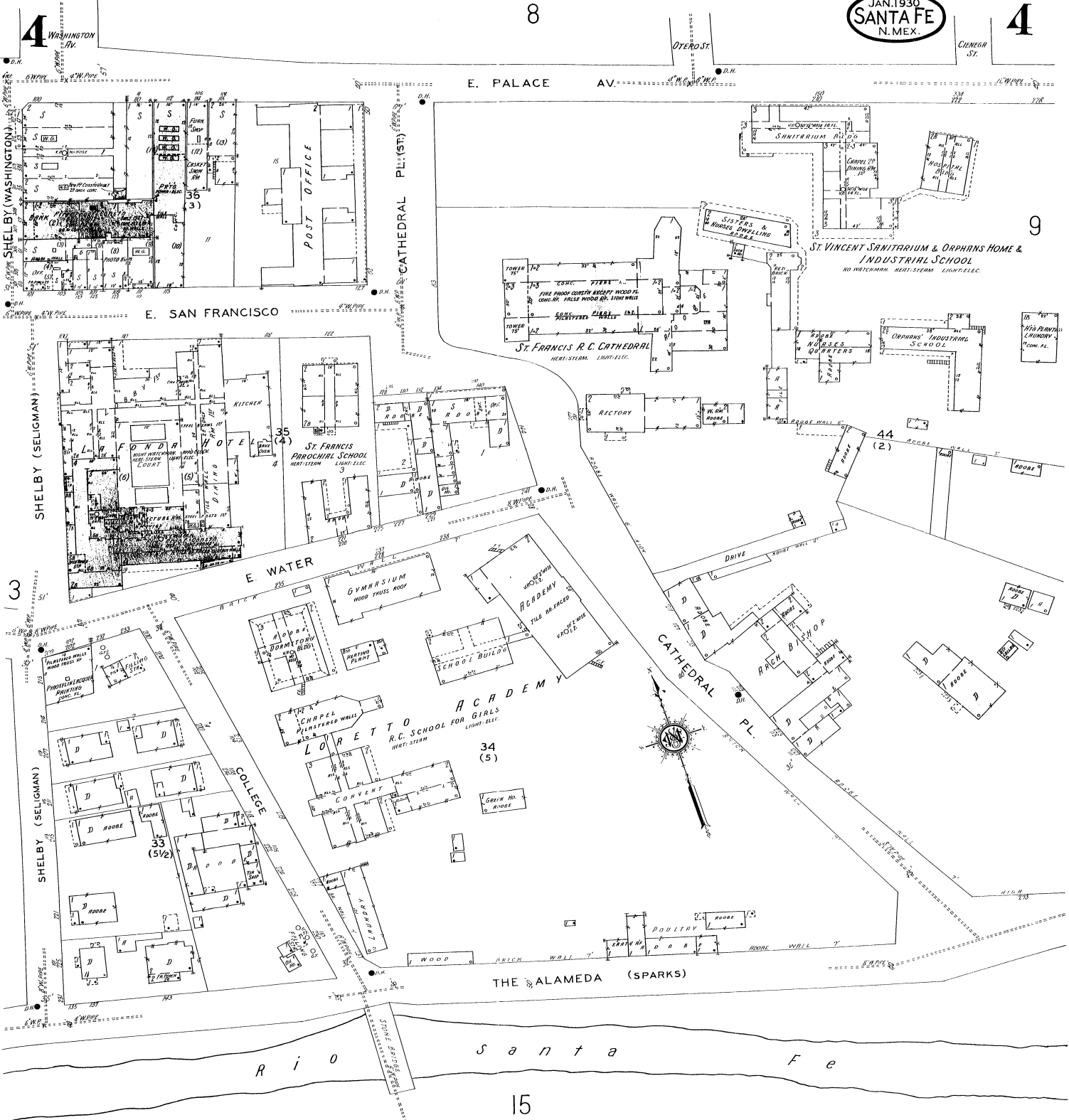


2



4

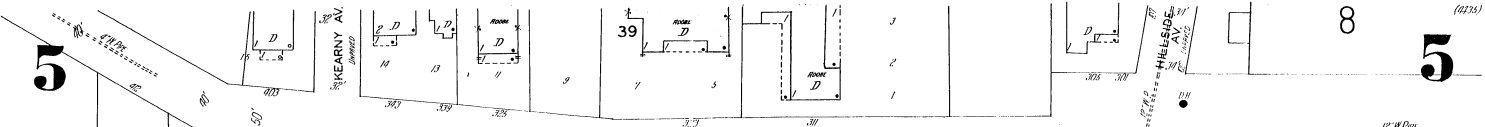




4

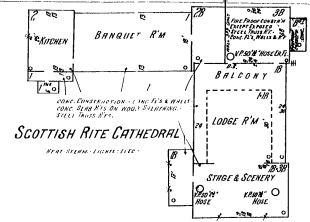
3

9

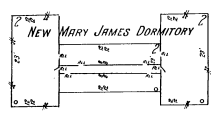


JAN. 1930
SANTAFE
 N. MEX.

WASHINGTON AV.

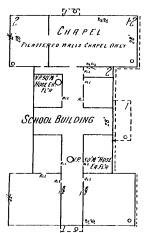
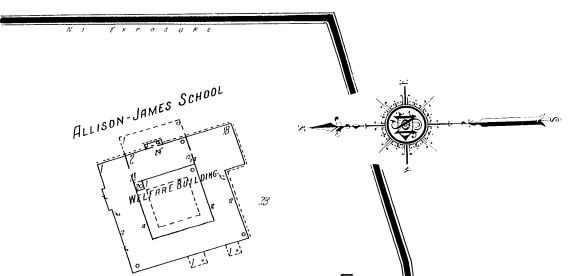


27
 (110)



ALLISON - JAMES SCHOOL

HEAT - STAIRS - LIGHTS - ELEV.



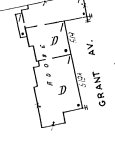
FEDERAL (TEMPLE) PL.

FEDERAL BLOCK

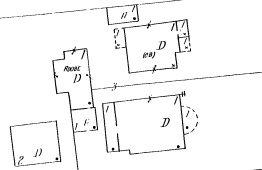
FEDERAL 7 ST.

28

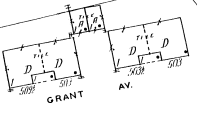
5



26



28



GRANT AV.

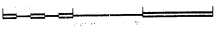
Arroyo De las Mascaras

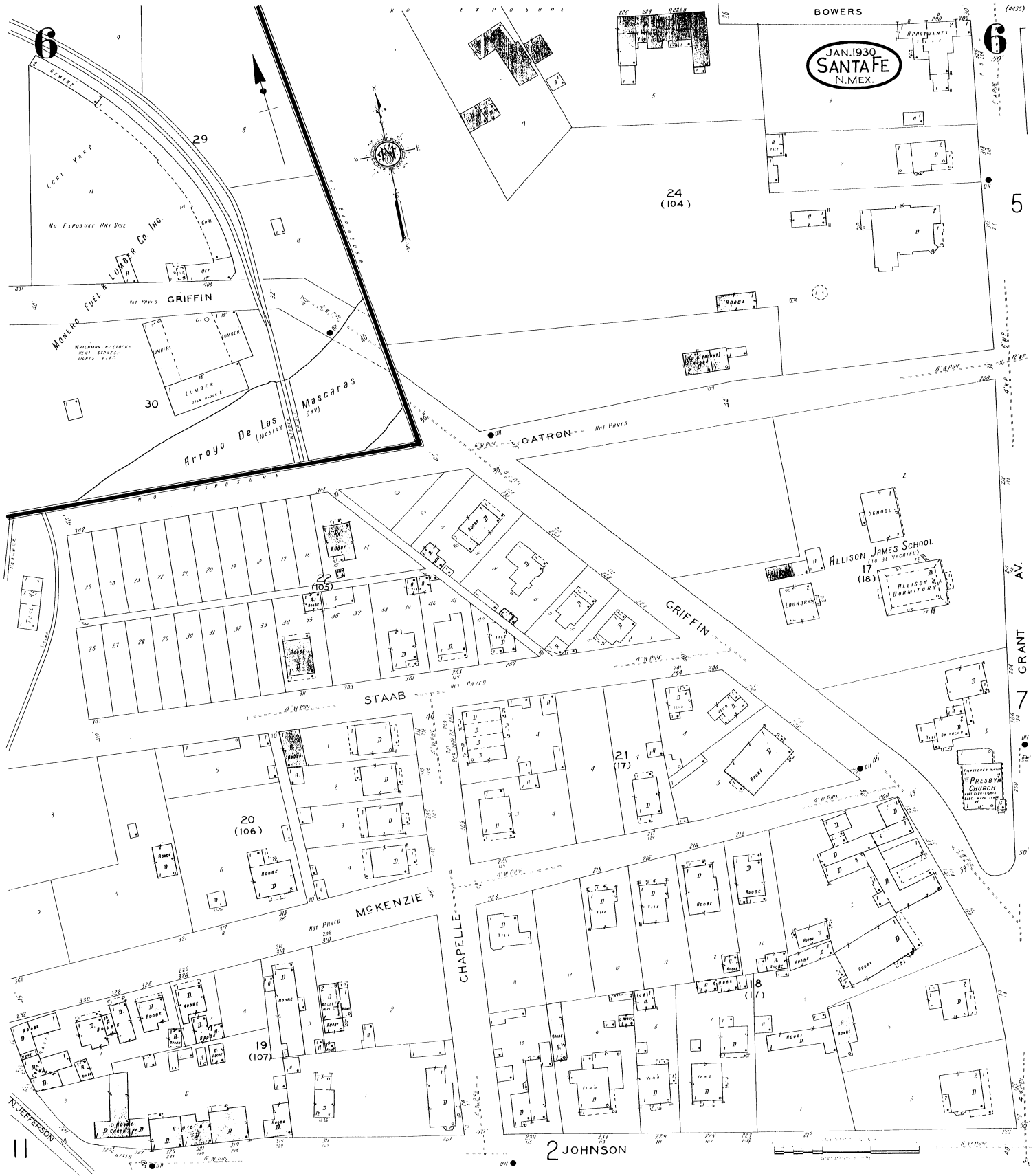
GRANT AV.

6

24

BOWERS



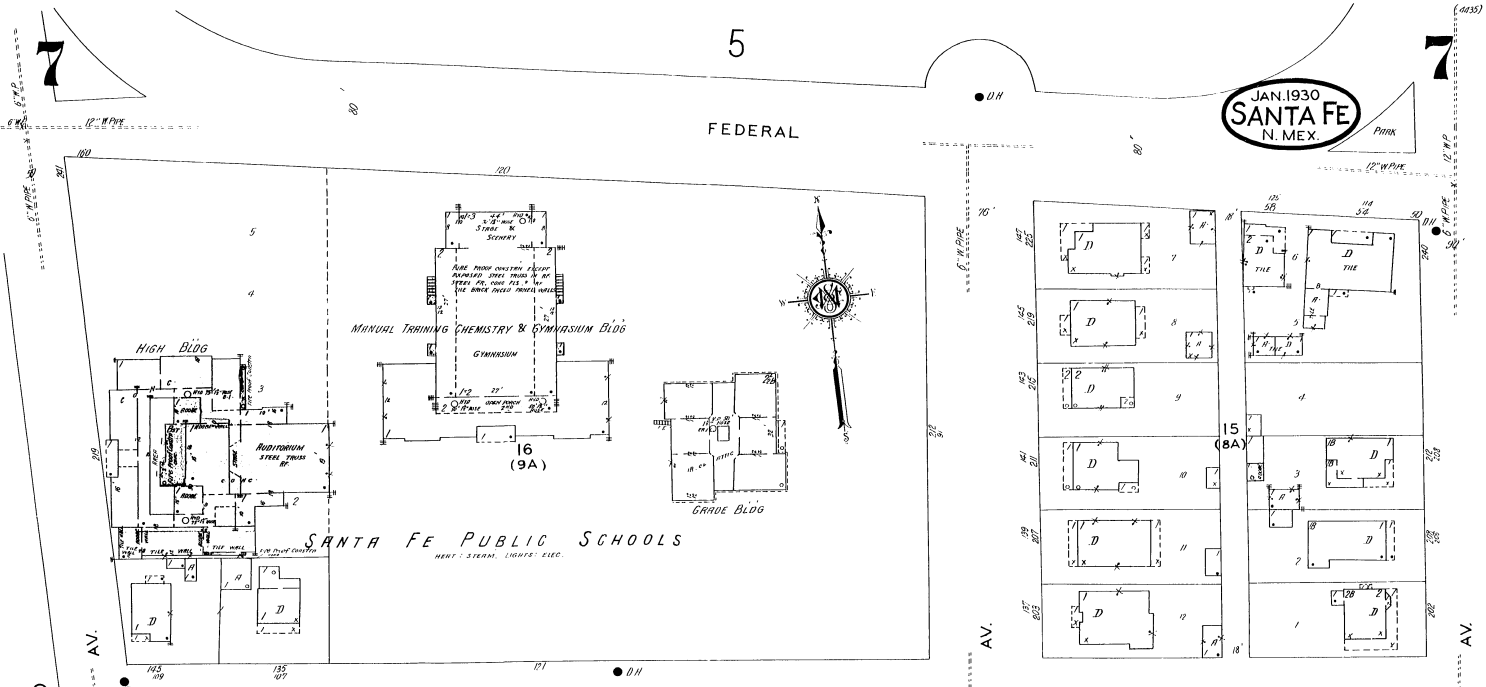


5

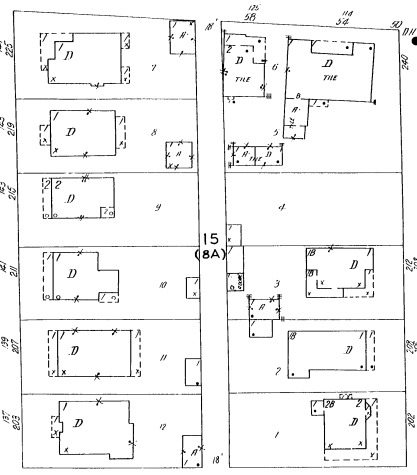
7

JAN. 1930
SANTA FE
N. MEX.

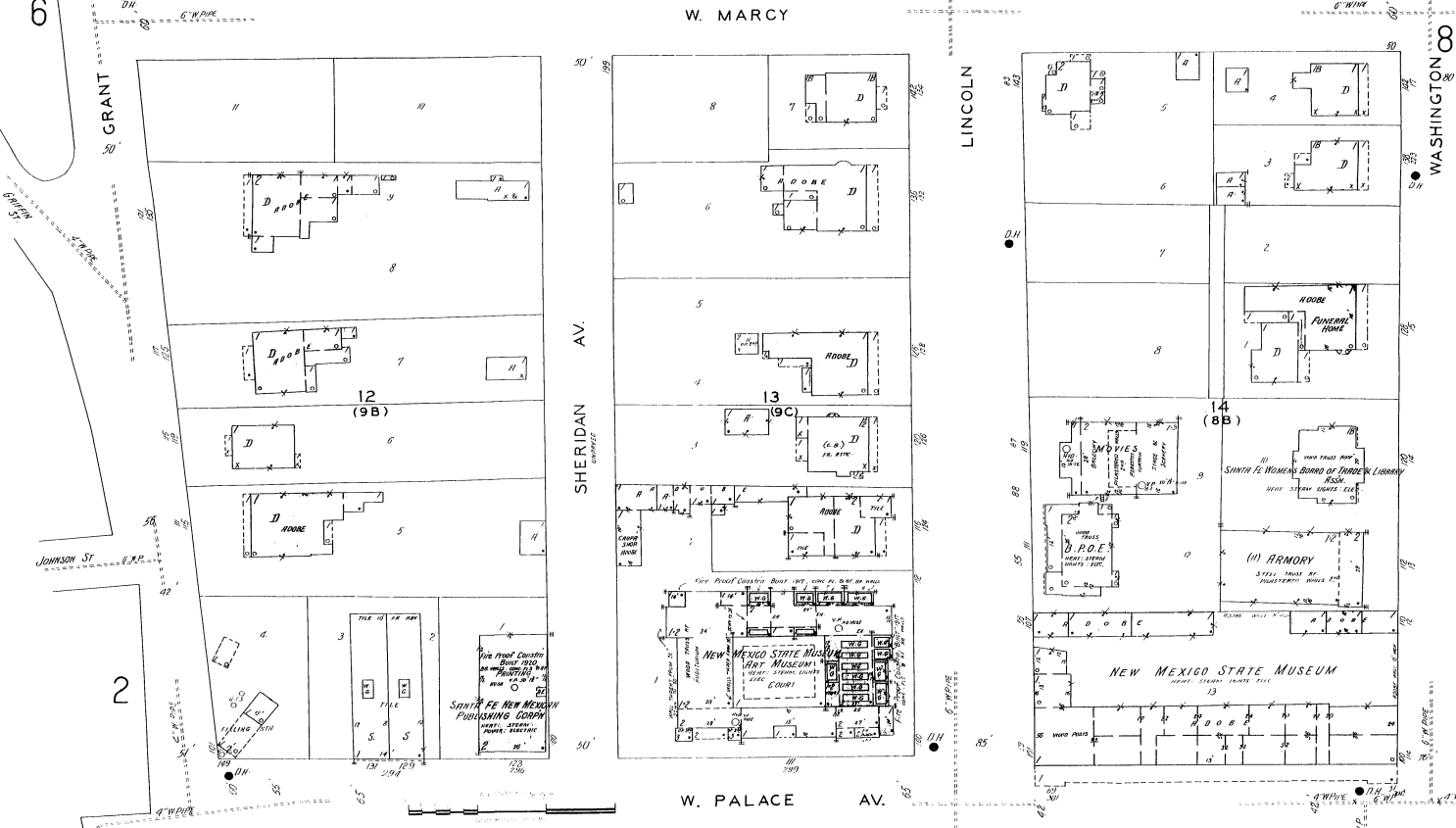
FEDERAL



SANTA FE PUBLIC SCHOOLS
HART - STEAM - CHURCH BLDG.



W. MARCY



W. PALACE AV.

3

WASHINGTON AV.

LINCOLN AV.

SHERIDAN AV.

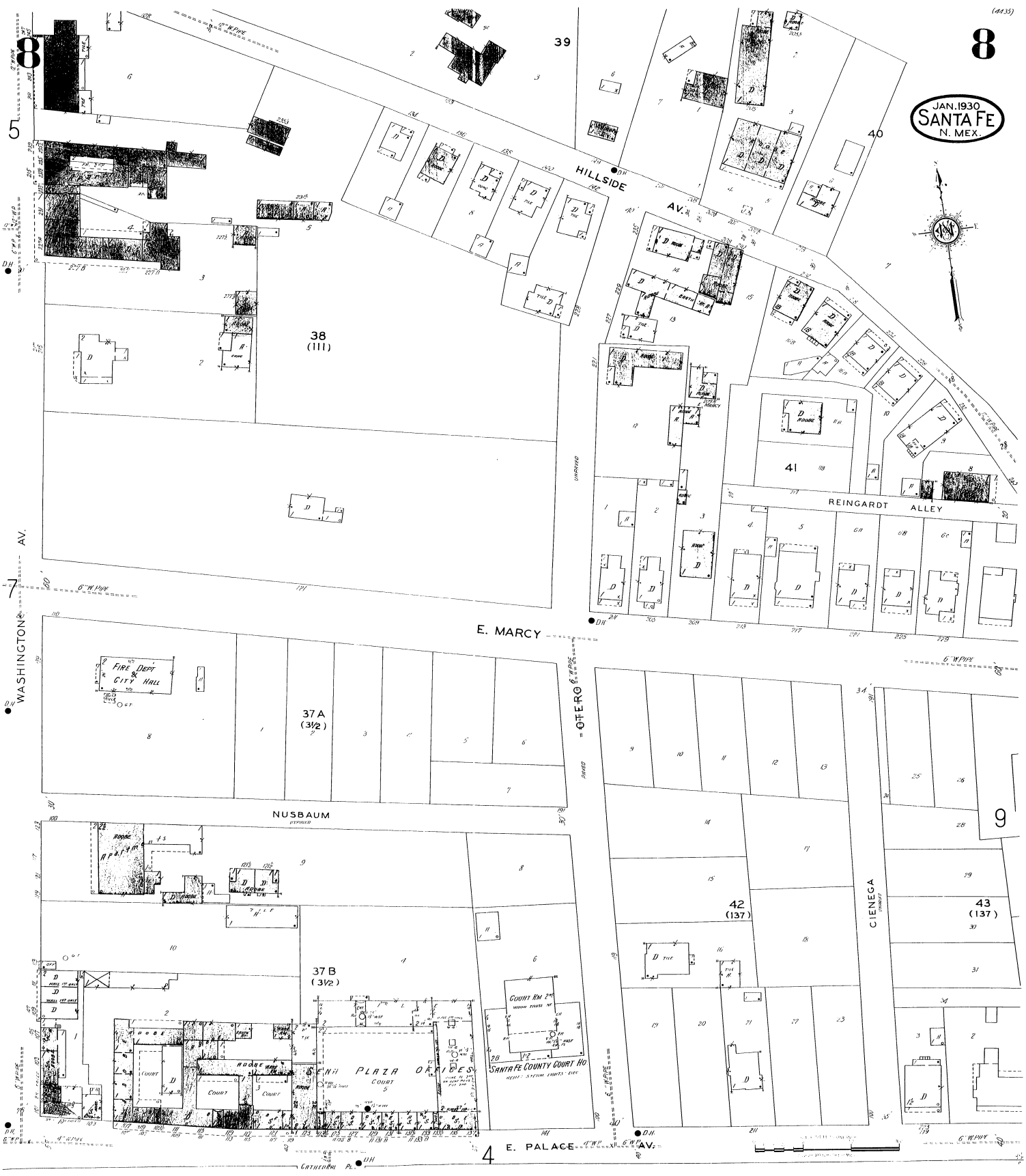
GRANT AV.

2

JOHNSON ST.

SHERIDAN ST.

JAN. 1930
SANTA FE
N. MEX.



E. MARCY

E. PALACE

WASHINGTON AV.

OTERO

CIENEGA

REINGARDT ALLEY

HILLSIDE AV.

38 (111)

37 A (3 1/2)

37 B (3 1/2)

42 (137)

9

43 (137)

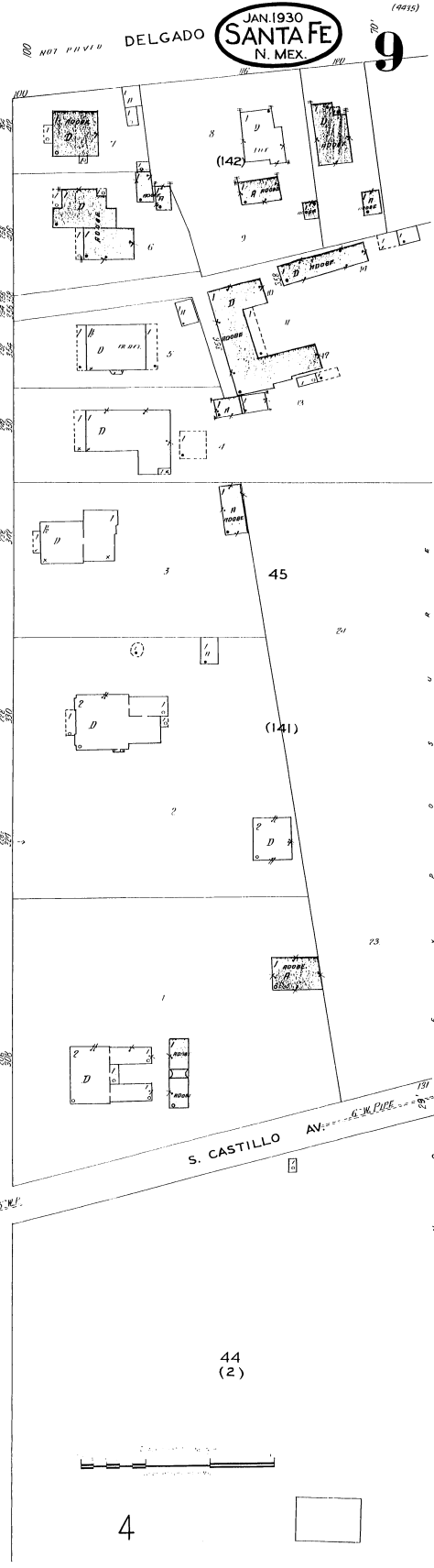
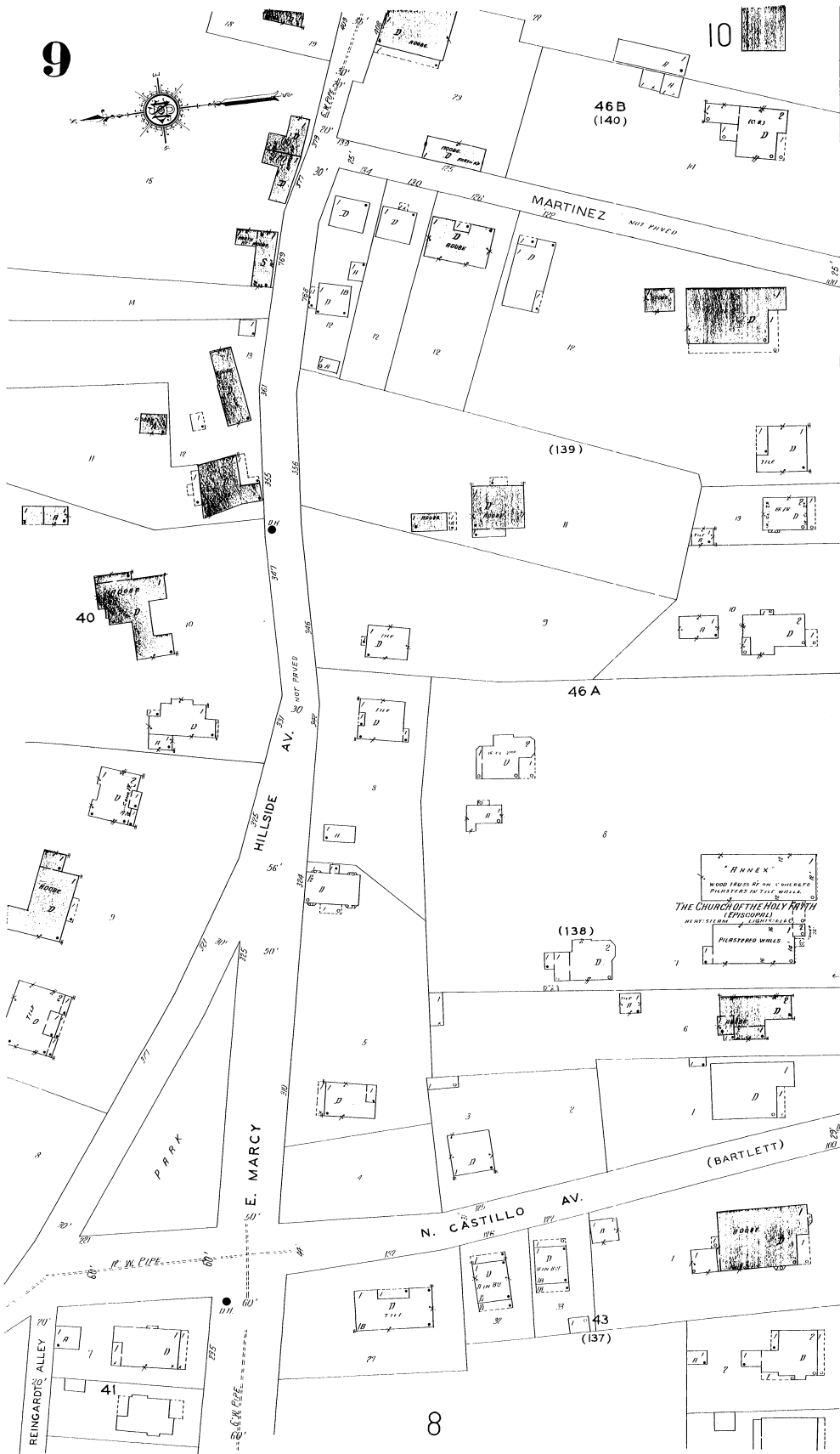
4

FIRE DEPT
CITY HALL

PLAZA DE ARMAS
COURT

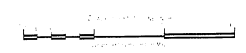
COURT NO. 10
SANTA FE COUNTY COURT NO. 10

9



JAN. 1930
SANTA FE
N. MEX.

9



4